



THE MEDICAL CENTER AT FRANKLIN

# Community Health Needs Assessment & Strategic Implementation Plan for 2019-2021



Med Center Health

The Medical Center at Franklin

**The Medical Center at Franklin  
Community Health Needs Assessment & Strategic Implementation Plan**

**Table of Contents**

<b>Introduction</b>	
Organizational Description	4
Service Area	6
Mission, Vision & Values	7
Community Definition & Description	8
County Health Rankings	12
Existing Licensed Healthcare Resources in BRADD Area	13
Purpose	27
<b>Executive Summary</b>	28
<b>Process</b>	29
<b>Implementation Strategies for 2016-2018</b>	34
Strengthening Partnerships with Key Community Organizations	34
Preventative Care & Disease Management	36
Access to Care	39
<b>Implementation Strategies for 2019-2021</b>	40
Strengthening Partnerships with Key Community Organizations	40
Implementation Strategies	41
Substance Abuse & Addiction	41
Cardiovascular Disease	42
Obesity	43
Diabetes	43
Lung Disease	44

Access to Care	45
<b>Communication Plan</b>	46
<b>Conclusion</b>	47

## Organizational Description

The Medical Center at Franklin, Inc. proudly serves the residents of southern Kentucky and northern Tennessee with the services that allow them to remain close to home for medical care. The hospital's roots reach back to the Franklin-Simpson Memorial Hospital (Hospital) which opened in December 1968. In 2000, Commonwealth Health Corporation (Corporation) established The Medical Center at Franklin, Inc., as a non-stock, nonprofit Kentucky corporation to acquire the Hospital.

The Medical Center at Franklin, Inc. has been determined by the Internal Revenue Service (the "IRS") to be a charitable organization as described in Section 501(c)(3) of the Internal Revenue Code of 1986, as amended (the "Code") and is exempt from federal income taxation by virtue of Sections 501(a) and 501(c)(3) of the Code.

The Medical Center at Franklin, Inc. is owned and controlled by Commonwealth Health Corporation, Inc., a non-stock, nonprofit Kentucky corporation ("CHC"), under a holding company arrangement, which was established in 1984. CHC has been determined by the IRS to be a charitable organization as described in Section 501(c)(3) of the Internal Revenue Code of 1986, as amended (the "Code") and is exempt from federal income taxation by virtue of Sections 501(a) and 501(c)(3) of the Code.

Since 2000, major facility additions, interior renovations and site development to and within the existing hospital facility have been made. They include (1) construction of a replacement 25-bed inpatient care unit, to include private rooms with private baths, isolation rooms, a nurse's station, clean and soiled utility rooms and other improvements to meet safety and accessibility requirements; (2) renovation of public and common areas, modernization of the food services department to meet safety requirements and upgrades of the imaging areas, including the MRI Suite; (3) construction of a new surgery department with two operation suites and an endoscopy room; and (4) upgrading and modernization of the physical plant, including a new chiller system, new air handlers, electrical service upgrade and replacement of the emergency generator and fire alarm systems. In addition, a separate office building has been constructed to provide office space for specialty clinics and physician services. Also, additional building space has been constructed to house certain ancillary services and to provide physician office space. In 2016, a building was purchased that houses both a primary care clinic and a physical therapy clinic of CHC.

The Medical Center at Franklin is a Joint Commission Accredited, 25-bed dual licensed critical access hospital. The hospital's Emergency Department is staffed with physicians and registered nurses 24 hours per day, 7 days per week. We offer CT, MRI, Digital Mammography, Ultrasound, and Nuclear Medicine services. Radiologists are available to read exams in real time via PACS or

on-site. The Laboratory and Respiratory Therapy Departments are staffed daily 24 hours per day. Our facility also provides physical rehabilitation services, including Physical Therapy, Speech Therapy, and Occupational Therapy. Other services offered include outpatient cardiopulmonary rehabilitation and an outpatient behavioral health program. Telemedicine services are also utilized to provide access to care to various specialty physicians.

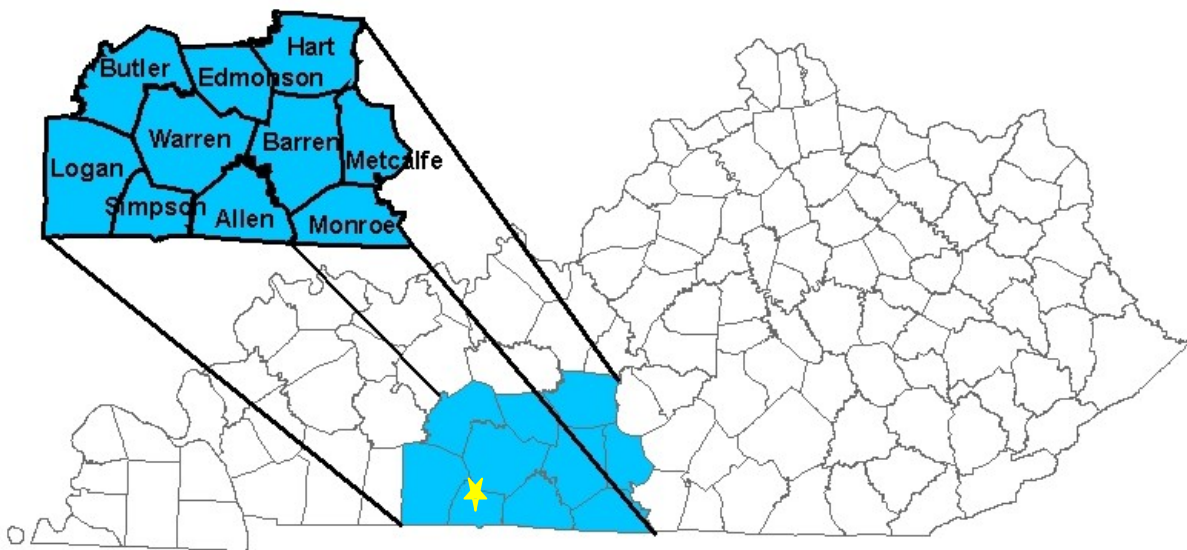
We have a surgery department with two operating suites, one endoscopy suite and a six bed PACU. Services include general surgery, podiatry surgery, otolaryngology surgery, cataract surgery and refractive surgery.

Currently we have five full-time primary care physicians who have private practices in Franklin. Several specialists hold clinics on campus to accommodate the local residents. Those specialists include Psychiatry, Obstetrics, Orthopedics, Cardiologist, Pulmonologist, Nephrology, General Surgery and Otolaryngologists.

## Service Area Description

The Medical Center at Franklin is located in South-central Kentucky off Interstate 65, between exits 2 and 6, 2 miles north of the Tennessee state line. Our hospital provides inpatient and outpatient services for residents in Franklin and Simpson County, Kentucky which makes up approximately 71.4% of our discharges. Other patient origins come from Warren County, Kentucky, 11%; Logan County, Kentucky 5.6%; and Allen County, Kentucky 3.3%. The other Kentucky counties identified are Barren, Butler, Pike, Todd, Edmonson, Metcalfe and Monroe. These counties combined account for 1.1% of discharges. During 2016-2018, The Medical Center at Franklin's out of state discharges was 6.8%. Of the 6.8%, 74% of these discharges were from Tennessee. Some of the other states included were Alabama, Florida, Indiana, Michigan and Ohio.

★ The Medical Center at Franklin



## **Mission, Vision & Values**

### **MISSION**

The Medical Center at Franklin's mission is to care for people and improve the quality of life in the communities we serve.

### **VISION**

The Medical Center at Franklin will be an innovative leader in healthcare delivery and outcomes.

### **WHAT WE VALUE**

- |                       |  |
|-----------------------|--|
| <b>Quality</b>        | We are committed to providing the highest level of care and service at every opportunity.  |
| <b>People</b>         | People are our most valuable resource. We work together to achieve our organization's goals. We treat everyone with honor, dignity, and respect. |
| <b>Accountability</b> | Each of us is responsible for managing our resources ethically and wisely.   |

## Community Definition & Description

The City of Franklin is a prosperous community located in Simpson County, Kentucky. Access to a major interstate (I-65) is a major asset for our businesses. The community has been able to maintain a low cost of living while keeping a high quality of life in a “small town America” setting. This progressive small community has been honored as one of the 50 Best Small Southern Towns and placed on this exclusive list. Franklin is in close proximity to Bowling Green, Kentucky and Nashville, Tennessee which allows for big city amenities nearby. We have state-of-the-art healthcare, arts and culture, and recreation opportunities for youth and adults. In addition, an excellent local school system, technical school, nearby universities, colleges and other institutions provide opportunities for higher education. Franklin is the hub for the county consisting of approximately 18,108 individuals in 2018.

## Demographics

Historical populations

2010	17,327
2013	17,728
2014	17,826
2017	18,108

<https://www.census.gov/quickfacts/fact/table/simpsoncountykentucky/PST045218>

The population estimate 2017 provided by the U.S. Department of Commerce is 18,108 for Simpson County. Approximately 17% of the population represented individuals at and over the age of 65, and approximately 31% involved the ages of 18 and under. In addition, there were 6895 households between the years 2013-2017. The average persons per household during that time was 2.54.

The median household income during 2013-2017 was \$44,989 annually in Simpson County. The per capita income was \$22,663. Individuals represented in poverty were 14.4%. In addition, 84.8% of the county residents graduated from high school or had a higher degree, and 15.1% received a bachelor’s degree or higher.



**Cities and Towns:**

The following towns are located in Simpson County, Kentucky with Franklin being the County Seat:

- [Franklin](#)
- [Gold City](#)
- [Middleton](#)
- [Prices Mill](#)
- [Providence](#)
- [Salmons](#)
- [Rapids](#)

**Adjacent Counties:**

- [Warren County](#) (north)
- [Allen County](#) (east)
- [Sumner County, Tennessee](#) (southeast)
- [Robertson County, Tennessee](#) (southwest)
- [Logan County](#) (west)

**Simpson County, Kentucky:**

**People QuickFacts**

	<b><u>Simpson County</u></b>	<b><u>Kentucky</u></b>
Population, July 1, 2017 estimate	18,108	4,454,189
Population, 2010 (April 1) estimates base	17,327	4,339,340
Population, percent change, April 1, 2010-July 1, 2018	NA	3.0%
Population, percent change, April 1, 2010-July 1, 2017	4.5%	2.6%
Population, 2010	17,327	4,339,367
Persons under 5 years, percent, July 1, 2018	6.4%	6.2%
Persons under 18 years, percent	22.7%	24.2%
Persons 65 years and over, percent	16.6%	16.0%
Female persons, percent, July 1, 2018	50.9%	59.7%

White persons, percent, July 1, 2018 (a)	87.2%	87.8%
Black persons, percent, July 1, 2018 (a)	9.5%	8.4%
American Indian & Alaska Native persons (a)	0.4%	0.3%
Asian persons, percent (a)	0.9%	1.6%
Native Hawaiian & Other Pacific Islander persons, (a)	0.1%	0.1%
Persons reporting two or more races, percent, July 1, 2018	2.0%	1.9%
Persons of Hispanic or Latino Origin, percent (b)	2.4%	3.7%
White alone not Hispanic, percent, 2013	85.2%	84.6%
Living in same house 1 year & over, 2013-2017	88.7%	84.5%
Foreign born persons, percent, 2013-2017	1.9%	3.6%
Non-English language at home, percent age 5+, 2013-17	2.8%	5.3%
High school graduates, percent of persons age 25+, 2013-17	87.8%	85.2%

**People QuickFacts**

**Simpson County**

**Kentucky**

Bachelor's degree or higher, percent age 25+, 2013-2017	15.1%	23.2%
Veterans, 2013-2017	1,007	279,153
Mean travel time to work (minutes), workers age 16+, 2013-2017	19.5	23.1
Men-owned firms, 2012	904	184,154
Women-owned firms, 2012	339	106,011
Manufacturers' shipments, 2012 (\$1000), (c)	1,387,332	129,284,438
Merchant wholesaler sales, 2012 (\$1000), (c)	371,964	71,745,899
Retail sales, 2012 (\$1000), (c)	389.598	54,869,978

Retail sales per capita, 2012, (c)	\$12,526	\$22,215
Accommodation & food services sales, 2012 (\$1000), (c)	39,974	7,500,115
Building permits, 2017	116	12,630
Land area in square miles, 2010	234.2	39,486.34
Persons per square mile, 2010	74.0	109.9
FIPS Code	21	21,213

(a) Includes persons reporting only one race.

(b) Hispanics may be of any race, so also are included in applicable race categories.

(c) Economic census—Puerto Rico data not comparable

*Source U.S. Census Bureau: State and County QuickFacts. Data derived from Population Estimates, American Community Survey, Census of Population and Housing, State and County Housing Unit Estimates, County Business Patterns, Nonemployer Statistics, Economic Census, Survey of Business Owners, Building Permits, Consolidated Federal Funds Report*  
*Last Revised: July 1, 2018*

## County Health Rankings

<u>Demographics</u>	<u>Simpson County</u>	<u>Kentucky</u>
Poor or fair health	20%	21%
Poor physical health days	4.7	4.8
Poor mental health days	4.5	4.8
Low birthweight	10%	9%
Adult Smoking	23%	24%
Adult Obesity	39%	34%
Physical Inactivity	27%	28%
Access to exercise opportunities	78%	72%
Excessive drinking	14%	16%
Alcohol-impaired driving deaths	9%	28%
Sexually transmitted infections	297.3	395.2
Teen births	45	38
Uninsured	6%	7%
Primary care physicians	2,250:1	1,510:1
Dentists	1,810:1	1,560:1
Mental health providers	1,060:1	520:1
Preventable hospital stays	116	77
Diabetes monitoring	86%	86%
Mammography screenings	46%	59%

Source:

<http://www.countyhealthrankings.org/app/kentucky/2018/rankings/simpson/county/outcomes/>

### Existing Licensed Healthcare Resources in BRADD Area

\*\*\* Kentucky Cabinet for Health and Family Services. BRADD Licensed Health Care Facilities [Table]. *OIG Directories*.

Retrieved from URL <https://chfs.ky.gov/agencies/os/oig/dhc/Pages/hct.aspx>

County	Facility Name	City	Certified Beds	Type
ALLEN	CAL TURNER REHAB AND SPECIALTY CARE	SCOTTSDALE	110	LONG TERM CARE
BARREN	SIGNATURE HEALTHCARE OF GLASGOW REHAB & WELLNESS CENTER	GLASGOW	68	LONG TERM CARE
BARREN	GLASGOW STATE NURSING FACILITY	GLASGOW	100	LONG TERM CARE
BARREN	GLENVIEW HEALTH CARE FACILITY	GLASGOW	60	LONG TERM CARE
BARREN	NHC HEALTHCARE, GLASGOW	GLASGOW	194	LONG TERM CARE
BARREN	T J SAMSON COMMUNITY HOSPITAL	GLASGOW	16	LONG TERM CARE
EDMONSON	EDMONSON CENTER	BROWNSVILLE	74	LONG TERM CARE
HART	SIGNATURE HEALTHCARE OF HART COUNTY REHAB & WELLNESS CENTER	HORSE CAVE	104	LONG TERM CARE
LOGAN	AUBURN HEALTH CARE	AUBURN	66	LONG TERM CARE
LOGAN	CREEKWOOD PLACE NURSING & REHAB CENTER, INC	RUSSELLVILLE	104	LONG TERM CARE
METCALFE	METCALFE HEALTH CARE CENTER	EDMONTON	71	LONG TERM CARE
MONROE	SIGNATURE HEALTHCARE OF MONROE COUNTY	TOMPKINSVILLE	104	LONG TERM CARE

	REBAB AND WELLNESS CENTER			
SIMPSON	FRANKLIN-SIMPSON NURSING AND REHABILITATION CENTER	FRANKLIN	98	LONG TERM CARE
WARREN	BOWLING GREEN NURSING AND REHABILITATION CENTER	BOWLING GREEN	66	LONG TERM CARE
WARREN	CHRISTIAN HEALTH CENTER	BOWLING GREEN	39	LONG TERM CARE
WARREN	COLONIAL CENTER	BOWLING GREEN	48	LONG TERM CARE
WARREN	GREENWOOD NURSING & REHABILITATION CENTER	BOWLING GREEN	128	LONG TERM CARE
WARREN	HOPKINS CENTER	WOODBURN	50	LONG TERM CARE
WARREN	MAGNOLIA VILLAGE	BOWLING GREEN	60	LONG TERM CARE
WARREN	SIGNATURE HEALTHCARE OF BOWLING GREEN	BOWLING GREEN	176	LONG TERM CARE
BARREN	BARREN COUNTY NURSING AND REHABILITATION	GLASGOW	94	LONG TERM CARE
BUTLER	MORGANTOWN CARE AND REHABILITATION CENTER	BUTLER	122	LONG TERM CARE
ALLEN	THE MEDICAL CENTER AT SCOTTSVILLE	SCOTTSVILLE	25	CRITICAL ACCESS HOSPITAL
BARREN	TJ SAMSON COMMUNITY HOSPITAL	GLASGOW	180	ACUTE
HART	THE MEDICAL CENTER AT CAVERNA	HORSE CAVE	25	CRITICAL ACCESS HOSPITAL
LOGAN	LOGAN MEMORIAL HOSPITAL	RUSSELLVILLE	75	ACUTE

MONROE	MONROE COUNTY MEDICAL CENTER	TOMPKINSVILLE	49	ACUTE
SIMPSON	THE MEDICAL CENTER AT FRANKLIN	FRANKLIN	25	CRITICAL ACCESS HOSPITAL
WARREN	TRISTAR GREENVIEW REGIONAL HOSPITAL	BOWLING GREEN	211	ACUTE
WARREN	RIVENDELL BEHAVIORAL HEALTH SERVICES	BOWLING GREEN	125	PSYCHIATRIC
WARREN	SOUTHERN KY REHAB HOSPITAL	BOWLING GREEN	60	REHAB
WARREN	THE MEDICAL CENTER AT BOWLING GREEN	BOWLING GREEN	337	ACUTE
WARREN	MEDICAL CENTER URGENTCARE	BOWLING GREEN	0	AMBULATORY CARE CLINIC
BARREN	T J SAMSON AMBULATORY CARE CENTER	GLASGOW	0	AMULATORY CARE CLINIC
BARREN	MCPEAK SURGERY CENTER	GLASGOW	0	AMBULATORY SURGICAL CENTER
WARREN	LIFESKILLS	BOWLING GREEN	0	COMMUNITY MENTAL HEALTH CENTER
LOGAN	ACTIVE DAY OF RUSSELLVILLE	RUSSELLVILLE	0	ADULT DAY HEALTH
WARREN	BARREN RIVER ADULT DAY CARE CENTER	BOWLING GREEN	0	ADULT DAY HEALTH
METCALFE	SHUFFETT'S ADULT DAY CARE, INC	EDMONTON	0	ADULT DAY HEALTH
METCALFE	GOLDEN YEARS ADULT DAY HEALTH CENTER	EDMONTON	0	ADULT DAY HEALTH
HART	THE OLE HOMEPLACE ADULT DAY HEALTH CARE CENTER-HART	MUNFORDVILLE	0	ADULT DAY HEALTH
WARREN	ACTIVE DAY OF BOWLING GREEN	BOWLING GREEN	0	ADULT DAY HEALTH

MONROE	MONROE COUNTY MEDICAL CENTER	TOMPKINSVILLE	0	ADULT DAY HEALTH
EDMONSON	ACTIVE DAY OF BROWNSVILLE	BROWNSVILLE	0	ADULT DAY HEALTH
BARREN	JUST FAMILY, INC	GLASGOW	0	ADULT DAY HEALTH
WARREN	FRESENIUS MEDICAL CARE BOWLING GREEN WARREN COUNTY	BOWLING GREEN	0	END STAGE RENAL DIALYSIS
WARREN	BOWLING GREEN HOME THERAPIES	BOWLING GREEN	0	END STAGE RENAL DIALYSIS
WARREN	DIALYSIS OF WARREN COUNTY	BOWLING GREEN	0	END STAGE RENAL DIALYSIS
BARREN	T J SAMSON KIDNEY CARE	GLASGOW	0	END STAGE RENAL DIALYSIS
WARREN	LOST RIVER DIALYSIS	BOWLING GREEN	0	END STAGE RENAL DIALYSIS
SIMPSON	FRESENIUS KIDNEY CARE RED OAK	FRANKLIN	0	END STAGE RENAL DIALYSIS
BARREN	FRESENIUS MEDICAL CARE GLASGOW	GLASGOW	0	END STAGE RENAL DIALYSIS
WARREN	RAINBOW, LLC	BOWLING GREEN	0	HOME HEALTH AGENCY
MONROE	LIFELINE HOME HEALTH	TOMPKINSVILLE	0	HOME HEALTH AGENCY
BARREN	T. J. SAMSON COMM HOSP HOME CARE PROGRAM	GLASGOW	0	HOME HEALTH AGENCY
WARREN	THE MEDICAL CENTER HOME CARE PROGRAM	BOWLING GREEN	0	HOME HEALTH AGENCY
WARREN	LIFELINE HEALTH CARE OF WARREN	BOWLING GREEN	0	HOME HEALTH AGENCY
LOGAN	LIFELINE HEALTH CARE OF LOGAN	RUSSELLVILLE	0	HOME HEALTH AGENCY
WARREN	HOSPICE OF SOUTHERN KENTUCKY, INC	BOWLING GREEN	0	HOSPICE



BARREN	T J SAMSON COMMUNITY HOSPITAL HOME CARE HOSPICE	GLASGOW	0	HOSPICE
WARREN	HOSPICE OF SOUTHERN KENTUCKY	BOWLING GREEN	0	HOSPICE
LOGAN	LIFESKILLS RESIDENTIAL DEVELOPMENT	RUSSELLVILLE	0	MENTALLY RETARDED/DEVELOPMENTALLY DISABLED GROUP HOME
WARREN	FAIRVIEW COMMUNITY HEALTH CENTER	BOWLING GREEN	0	PRIMARY CARE CENTER
BARREN	SPECTRUM CARE ACADEMY OF GLASGOW II	CAVE CITY	0	PSYCHIATRIC RESIDENTIAL TREATMENT FACILITY
BARREN	SPECTRUM CARE ACADEMY OF GLASGOW I	CAVE CITY	0	PSYCHIATRIC RESIDENTIAL TREATMENT FACILITY
WARREN	GGC WALK-IN CLINICS	BOWLING GREEN	0	SPECIALIZED HEALTH CLINIC
WARREN	COMMUNITY CLINIC	BOWLING GREEN	0	SPECIALIZED HEALTH CLINIC
BARREN	THE BARREN RIVER REGIONAL CANCER CENTER, INC	GLASGOW	0	SPECIALIZED MEDICAL TECHNOLOGY SERVICES
WARREN	WESTERN KENTUCKY DIAGNOSTIC IMAGING	BOWLING GREEN	0	SPECIALIZED MEDICAL TECHNOLOGY SERVICES
HART	CAVERNA PRIMARY CARE CLINIC	HORSE CAVE	0	PHYSICIAN OFFICE/LAB
BUTLER	ALL EASE CHIROPRACTIC, LLC	MORGANTOWN	0	PHYSICIAN OFFICE/LAB
WARREN	A NEW START	BOWLING GREEN	0	PHYSICIAN OFFICE/LAB
WARREN	ANSON HSIEH	BOWLING GREEN	0	PHYSICIAN OFFICE/LAB
EDMONSON	A PLUS FAMILY HEALTHCARE	BROWNSVILLE	0	PHYSICIAN OFFICE/LAB
WARREN	BLUEGRASS MEDICAL CARE	BOWLING GREEN	0	PHYSICIAN OFFICE/LAB
WARREN	ASSOCIATES IN PHYSICIAN SERVICES	BOWLING GREEN	0	PHYSICIAN OFFICE/LAB

ALLEN	ASSOCIATES IN PHYSICIAN SERVICES	SCOTTSVILLE	0	PHYSICIAN OFFICE/LAB
ALLEN	BLOINK CHIROPRACTIC	SCOTTSVILLE	0	PHYSICIAN OFFICE/LAB
WARREN	BLUEGRASS HEALTH CLINIC	BOWLING GREEN	0	PHYSICIAN OFFICE/LAB
WARREN	BOWLING GREEN DERMATOLOGY & SKIN CANCER SPECIALIST	BOWLING GREEN	0	PHYSICIAN OFFICE/LAB
WARREN	BOWLING GREEN INTERNAL MEDICINE	BOWLING GREEN	0	PHYSICIAN OFFICE/LAB
WARREN	BOWLING GREEN VA OUTPATIENT CLINIC	BOWLING GREEN	0	PHYSICIAN OFFICE/LAB
WARREN	BREIWA, WARE & JESKIE	BOWLING GREEN	0	PHYSICIAN OFFICE/LAB
WARREN	BRIAN K MACY MD	BOWLING GREEN	0	PHYSICIAN OFFICE/LAB
BUTLER	BUTLER COUNTY FAMILY CARE	MORGANTOWN	0	PHYSICIAN OFFICE/LAB
BARREN	CARDIOLOGY ASSOCIATES OF SOUTHERN KY	GLASGOW	0	PHYSICIAN OFFICE/LAB
WARREN	CARE HERE HEALTH CENTER	BOWLING GREEN	0	PHYSICIAN OFFICE/LAB
HART	CAVERNA PRIMARY CARE CLINIC	HORSE CAVE	0	PHYSICIAN OFFICE/LAB
ALLEN	COMMONWEALTH HEALTH CORPORATION	SCOTTSVILLE	0	PHYSICIAN OFFICE/LAB
WARREN	COMPREHENSIVE PAIN SPECIALISTS	BOWLING GREEN	0	PHYSICIAN OFFICE/LAB
SIMPSON	COMPTON & COMPTON EYE CARE, PLLC	FRANKLIN	0	PHYSICIAN OFFICE/LAB
WARREN	DAVID C NAPIER MD	BOWLING GREEN	0	PHYSICIAN OFFICE/LAB
LOGAN	DR CHARLES MATHIS OFFICE	RUSSELLVILLE	0	PHYSICIAN OFFICE/LAB

SIMPSON	DR SANDA CRNKIC DBA SPINECARE CHIROPRACTIC	FRANKLIN	0	PHYSICIAN OFFICE/LAB
BARREN	EAST SIDE FAMILY MEDICAL	GLASGOW	0	PHYSICIAN OFFICE/LAB
WARREN	ENT BOWLING GREEN	BOWLING GREEN	0	PHYSICIAN OFFICE/LAB
SIMPSON	ENT BOWLING GREEN FRANKLIN	FRANKLIN	0	PHYSICIAN OFFICE/LAB
BARREN	FAMILY PRACTICE CENTER	GLASGOW	0	PHYSICIAN OFFICE/LAB
SIMPSON	FAST PACE KENTUCKY	FRANKLIN	0	PHYSICIAN OFFICE/LAB
LOGAN	FAST PACE KENTUCKY	RUSSELLVILLE	0	PHYSICIAN OFFICE/LAB
MONROE	GAMALIEL CLINIC	GAMALIEL	0	PHYSICIAN OFFICE/LAB
HART	GGC- MUNFORDVILLE – PANDEYA	MUNFORDVILLE	0	PHYSICIAN OFFICE/LAB
BUTLER	GHAYTH M HAMMAD, MD, PSC	MORGANTOWN	0	PHYSICIAN OFFICE/LAB
BARREN	GLASGOW PEDIATRICS HEALTHCARE	GLASGOW	0	PHYSICIAN OFFICE/LAB
BARREN	GLASGOW URGENT CLINIC INC	GLASGOW	0	PHYSICIAN OFFICE/LAB
BARREN	GLASGOW TREATMENT CENTER	BARREN	0	PHYSICIAN OFFICE/LAB
WARREN	GLASSER CLINIC	BOWLING GREEN	0	PHYSICIAN OFFICE/LAB
EDMONSON	GLK ENTERPRISES, LLC DBA WILKES CLINIC	BROWNSVILLE	0	PHYSICIAN OFFICE/LAB
WARREN	GRAVES GILBERT CLINIC - PEDIATRIC ASSOCIATES	BOWLING GREEN	0	PHYSICIAN OFFICE/LAB
WARREN	GRAVES GILBERT CLINIC - PRIME CARE	BOWLING GREEN	0	PHYSICIAN OFFICE/LAB

WARREN	GRAVES GILBERT CLINIC - WKU	BOWLING GREEN	0	PHYSICIAN OFFICE/LAB
SIMPSON	GRAVES GILBERT CLINIC- ADAMS	FRANKLIN	0	PHYSICIAN OFFICE/LAB
BARREN	GRAVES GILBERT CLINIC CAVE CITY WILLIAMS	CAVE CITY	0	PHYSICIAN OFFICE/LAB
WARREN	GRAVES GILBERT CLINIC FAMILY CARE CENTER	BOWLING GREEN	0	PHYSICIAN OFFICE/LAB
SIMPSON	GRAVES GILBERT CLINIC FRANKLIN RED OAK	FRANKLIN	0	PHYSICIAN OFFICE/LAB
WARREN	GRAVES GILBERT CLINIC FCC – LINDSEY WHITEMAN	BOWLING GREEN	0	PHYSICIAN OFFICE/LAB
WARREN	GRAVES GILBERT CLINIC D GRANESE	BOWLING GREEN	0	PHYSICIAN OFFICE/LAB
BARREN	GRAVES GILBERT CLINIC GLASGOW	GLASGOW	0	PHYSICIAN OFFICE/LAB
WARREN	GRAVES GILBERT CLINIC HSIEH	BOWLING GREEN	0	PHYSICIAN OFFICE/LAB
WARREN	GRAVES GILBERT CLINIC HARTLAND	BOWLING GREEN	0	PHYSICIAN OFFICE/LAB
BUTLER	GRAVES GILBERT CLINIC MORGANTOWN	MORGANTOWN	0	PHYSICIAN OFFICE/LAB
WARREN	GRAVES GILBERT CLINIC- MAB	BOWLING GREEN	0	PHYSICIAN OFFICE/LAB
LOGAN	GRAVES GILBERT CLINIC LEWISBURG	LOGAN	0	PHYSICIAN OFFICE/LAB
LOGAN	GRAVES GILBERT CLINIC PSC	RUSSELLVILLE	0	PHYSICIAN OFFICE/LAB
BARREN	GRAVES GILBERT CLINIC SOUTH	GLASGOW	0	PHYSICIAN OFFICE/LAB
WARREN	GRAVES GILBERT CLINIC UROLOGY GROUP	BOWLING GREEN	0	PHYSICIAN OFFICE/LAB
WARREN	GRAVES GILBERT CLINIC- WALK-IN-CARE	BOWLING GREEN	0	PHYSICIAN OFFICE/LAB
WARREN	GRAVES GILBERT CLINIC YURCHISIN	BOWLING GREEN	0	PHYSICIAN OFFICE/LAB

WARREN	GREENVIEW MEDICAL GROUP BOWLING GREEN	BOWLING GREEN	0	PHYSICIAN OFFICE/LAB
WARREN	GREENVIEW MEDICAL GROUP THE ALLEN CLINIC	BOWLING GREEN	0	PHYSICIAN OFFICE/LAB
WARREN	GREENWOOD URGENT CLINIC	BOWLING GREEN	0	PHYSICIAN OFFICE/LAB
WARREN	HEALTHFIRST FAMILY MEDICAL CLINIC	BOWLING GREEN	0	PHYSICIAN OFFICE/LAB
WARREN	INDAR M JHAMB MD	BOWLING GREEN	0	PHYSICIAN OFFICE/LAB
SIMPSON	INTERVENTIONAL PAIN SPECIALISTS	FRANKLIN	0	PHYSICIAN OFFICE/LAB
ALLEN	INTERVENTIONAL PAIN SPECIALISTS	SCOTTSVILLE	0	PHYSICIAN OFFICE/LAB
BARREN	INTERVENTIONAL PAIN SPECIALISTS	GLASGOW	0	PHYSICIAN OFFICE/LAB
WARREN	INTERVENTIONAL PAIN SPECIALISTS OF BOWLING GREEN	BOWLING GREEN	0	PHYSICIAN OFFICE/LAB
BARREN	JACKSON HEALTH AND WELLNESS CLINIC	GLASGOW	0	PHYSICIAN OFFICE/LAB
BARREN	JAMES P CREWS MD	CAVE CITY	0	PHYSICIAN OFFICE/LAB
WARREN	JEFFREY PURVIS MD	BOWLING GREEN	0	PHYSICIAN OFFICE/LAB
WARREN	KENTUCKY SKIN CANCER CENTER	BOWLING GREEN	0	PHYSICIAN OFFICE/LAB
WARREN	K G SAHETYA MD PSC	BOWLING GREEN	0	PHYSICIAN OFFICE/LAB
LOGAN	LAWRENCE JOSEPH GOTTS DO	RUSSELLVILLE	0	PHYSICIAN OFFICE/LAB
LOGAN	LOGAN PHYSICIANS PRACTICE LLC	RUSSELLVILLE	0	PHYSICIAN OFFICE/LAB
LOGAN	LOGAN PRIMARY CARE AUBURN	AUBURN	0	PHYSICIAN OFFICE/LAB
LOGAN	LOGAN SPECIALTY CLINIC	RUSSELLVILLE	0	PHYSICIAN OFFICE/LAB

BARREN	MEDICAL ASSOC OF SOUTHERN KENTUCKY	GLASGOW	0	PHYSICIAN OFFICE/LAB
WARREN	MED CENTER HEALTH NEUROLOGY	BOWLING GREEN	0	PHYSICIAN OFFICE/LAB
WARREN	MED CENTER PRIMARY CARE	BOWLING GREEN	0	PHYSICIAN OFFICE/LAB
SIMPSON	MEDICAL CENTER PRIMARY CARE FRANKLIN	SIMPSON	0	PHYSICIAN OFFICE/LAB
WARREN	MEDICAL CENTER URGENTCARE	BOWLING GREEN	0	PHYSICIAN OFFICE/LAB
ALLEN	MEDICAL CTR SCOTTSVILLE PRIMARY CARE CLINIC, THE	SCOTTSVILLE	0	PHYSICIAN OFFICE/LAB
MONROE	MONROE CO MEDICAL CENTER MEDICAL PRACTICE	TOMPKINSVILLE	0	PHYSICIAN OFFICE/LAB
MONROE	MONROE FAMILY MEDICAL CENTER	TOMPKINSVILLE	0	PHYSICIAN OFFICE/LAB
WARREN	MORT SHAHMIR MD	BOWLING GREEN	0	PHYSICIAN OFFICE/LAB
HART	MUNFORDVILLE PRIMARY CARE CLINIC	MUNFORDVILLE	0	PHYSICIAN OFFICE/LAB
HART	NEPHROLOGY ASSOCIATES OF KENTUCKIANA	MUNFORDVILLE	0	PHYSICIAN OFFICE/LAB
WARREN	NORTON CHILDREN'S MATERNAL FETAL MEDICINE	WARREN	0	PHYSICIAN OFFICE/LAB
LOGAN	P K HAYDEN LOGAN FAMILY PRACTICE	RUSSELLVILLE	0	PHYSICIAN OFFICE/LAB
BARREN	PENDLETON FAMILY CARE	GLASGOW	0	PHYSICIAN OFFICE/LAB
LOGAN	RONALD B ELDER MD PSC	RUSSELLVILLE	0	PHYSICIAN OFFICE/LAB
WARREN	SAM KESRI MD	BOWLING GREEN	0	PHYSICIAN OFFICE/LAB
SIMPSON	SAM PERSAD MD	FRANKLIN	0	PHYSICIAN OFFICE/LAB

WARREN	SCOTT C SIMS MD	BOWLING GREEN	0	PHYSICIAN OFFICE/LAB
ALLEN	SCOTTSVILLE URGENT CLINIC	SCOTTSVILLE	0	PHYSICIAN OFFICE/LAB
WARREN	SPERO HEALTH	BOWLING GREEN	0	PHYSICIAN OFFICE/LAB
BUTLER	ST CAMILLUS URGENTCARE MORGANTOWN	MORGANTOWN	0	PHYSICIAN OFFICE/LAB
WARREN	SUNSHINE HEALTHCARE CENTER, THE	BOWLING GREEN	0	PHYSICIAN OFFICE/LAB
BARREN	T J SAMSON OUTPATIENT SERVICES UROLOGY & GI	GLASGOW	0	PHYSICIAN OFFICE/LAB
BARREN	T J HEALTH PARTNERS THE WALMART CLINIC	GLASGOW	0	PHYSICIAN OFFICE/LAB
BARREN	T J HEALTH PAVILION LABORATORY	GLASGOW	0	PHYSICIAN OFFICE/LAB
WARREN	TAPP MEDICAL CLINIC	BOWLING GREEN	0	PHYSICIAN OFFICE/LAB
WARREN	TIM LONG MD PSC	BOWLING GREEN	0	PHYSICIAN OFFICE/LAB
WARREN	THE PRIVATE PRACTICE	BOWLING GREEN	0	PHYSICIAN OFFICE/LAB
MONROE	TOMPKINSVILLE PRIMARY CARE ASSOCIATES	TOMPKINSVILLE	0	PHYSICIAN OFFICE/LAB
BARREN	TONY L HOGAN APRN HEALTH CLINIC	GLASGOW	0	PHYSICIAN OFFICE/LAB
WARREN	VERDANT HEALTHCARE	BOWLING GREEN	0	PHYSICIAN OFFICE/LAB
BARREN	WAGNER EYE CARE CENTER	GLASGOW	0	PHYSICIAN OFFICE/LAB
WARREN	WESTERN KY HEART & LUNG ASSOCIATES	BOWLING GREEN	0	PHYSICIAN OFFICE/LAB
WARREN	WILLIAM HARRIGAN MD	BOWLING GREEN	0	PHYSICIAN OFFICE/LAB
WARREN	WOMEN'S HEALTH SPECIALISTS	BOWLING GREEN	0	PHYSICIAN OFFICE/LAB

WARREN	ZIA NEUROLOGY ASSOCIATES	BOWLING GREEN	0	PHYSICIAN OFFICE/LAB
WARREN	ACCULAB	BOWLING GREEN	0	LAB
WARREN	BOWLING GREEN ASSOCIATED PATHOLOGISTS, PSC	BOWLING GREEN	0	LAB
HART	FAMILY MEDICAL CENTER OF HART COUNTY	MUNFORDVILLE	0	LAB
WARREN	GILBERT BARBEE MOORE & MCILVOY PSC	BOWLING GREEN	0	LAB
WARREN	GRANESE PATHOLOGY LABORATORY	BOWLING GREEN	0	LAB
BARREN	PATHGROUP (TJ SAMSON)	GLASGOW	0	LAB
WARREN	THE KIDZ CLUB	BOWLING GREEN	0	PRESCRIBED PEDIATRIC EXTENDED CARE
WARREN	PREVENTION LIFESKILLS, INC	BOWLING GREEN	0	ALCOHOL DRUG PREVENTION
LOGAN	ADVANCED BEHAVIORAL CONSULTANTS	RUSSELLVILLE	0	ALCOHOL AND OTHER DRUG ENTITY
BARREN	ALLIANCE COUNSELING ASSOCIATES	GLASGOW	0	ALCOHOL AND OTHER DRUG ENTITY
BUTLER	ANDREA'S MISSION	MORGANTOWN	0	ALCOHOL AND OTHER DRUG ENTITY
BUTLER	ANDREA'S MISSION FOR MEN	MORGANTOWN	0	ALCOHOL AND OTHER DRUG ENTITY
WARREN	ASAP AT WILSON PLACE	BOWLING GREEN	0	ALCOHOL AND OTHER DRUG ENTITY
HART	BLUEGRASS PROFESSIONAL COUNSELING	MUNFORDVILLE	0	ALCOHOL AND OTHER DRUG ENTITY
WARREN	CENTER FOR BEHAVIORAL HEALTH KENTUCKY, INC	BOWLING GREEN	0	ALCOHOL AND OTHER DRUG ENTITY



WARREN	COMMUNITY RESOURCE CENTER INC	BOWLING GREEN	0	ALCOHOL AND OTHER DRUG ENTITY
WARREN	COMPASS COUNSELING	BOWLING GREEN	0	ALCOHOL AND OTHER DRUG ENTITY
WARREN	EDUCATIONAL COUNSELING OF AMERICA	BOWLING GREEN	0	ALCOHOL AND OTHER DRUG ENTITY
BARREN	FAMILY OPTIONS, INC	GLASGOW	0	ALCOHOL AND OTHER DRUG ENTITY
WARREN	HAVEN4CHANGE, INC	BOWLING GREEN	0	AODE-RESIDENTIAL FACILITY
WARREN	HILLTOP COUNSELING SERVICES	BOWLING GREEN	0	ALCOHOL AND OTHER DRUG ENTITY
WARREN	INTERVENTION COUNSELING	BOWLING GREEN	0	ALCOHOL AND OTHER DRUG ENTITY
WARREN	JOURNEYPURE BOWLING GREEN	BOWLING GREEN	0	ALCOHOL AND OTHER DRUG ENTITY
WARREN	LIFESKILLS, INC	BOWLING GREEN	0	ALCOHOL AND OTHER DRUG ENTITY
ALLEN	MORE TO LIFE COUNSELING, LLC	SCOTTSVILLE	0	ALCOHOL AND OTHER DRUG ENTITY
ALLEN	PARK PLACE RECOVERY CENTER FOR WOMEN	SCOTTSVILLE	0	ALCOHOL AND OTHER DRUG ENTITY
WARREN	PARK PLACE RECOVER CENTER FOR MEN	BOWLING GREEN	0	ALCOHOL AND OTHER DRUG ENTITY
SIMPSON	PEACEFUL SOLUTIONS COUNSELING SERVICES	FRANKLIN	0	ALCOHOL AND OTHER DRUG ENTITY
WARREN	SOKY COUNSELING	BOWLING GREEN	0	ALCOHOL AND OTHER DRUG ENTITY
ALLEN	TIME OUT COMMUNITY COUNSELING & CORRECTIONAL SERVICE	SCOTTSVILLE	0	ALCOHOL AND OTHER DRUG ENTITY
WARREN	HOPEBRIDGE	BOWLING GREEN	0	BEHAVIORAL HEALTH SERVICES ORGANIZATION
WARREN	JOURNEYPURE BOWLING GREEN	BOWLING GREEN	0	BEHVIORAL HEALTH SERVICES ORGANIZATION
LOGAN	MILLER FAMILY CARE HOME	AUBURN	3	FAMILY CARE HOMES

ALLEN	CORNERSTONE MANOR, LLC	SCOTTSVILLE	36	FREE STANDING PERSONAL CARE HOME
ALLEN	SCOTTSVILLE MANOR	SCOTTSVILLE	40	FREE STANDING PERSONAL CARE HOME
HART	HART COUNTY MANOR	MUNFORDVILLE	54	FREE STANDING PERSONAL CARE HOME
METCALFE	HARPER'S HOME FOR THE AGED	EDMONTON	27	FREE STANDING PERSONAL CARE HOME
SIMPSON	LEWIS MEMORIAL METHODIST HOME	FRANKLIN	23	FREE STANDING PERSONAL CARE HOME
WARREN	FERN TERRACE OF BOWLING GREEN, LLC	BOWLING GREEN	114	FREE STANDING PERSONAL CARE HOME
WARREN	THE HAVEN AT MASSEY SPRINGS	BOWLING GREEN	18	FREE STANDING PERSONAL CARE HOME
WARREN	COMFORT KEEPERS	BOWLING GREEN	0	CERTIFIED PERSONAL SERVICE AGENCY
ALLEN	COMPANION CARE SERVICES, LLC	SCOTTSVILLE	0	CERTIFIED PERSONAL SERVICE AGENCY
WARREN	HELP AT HOME, INC	BOWLING GREEN	0	CERTIFIED PERSONAL SERVICE AGENCY
WARREN	HOME INSTEAD SENIOR CARE	BOWLING GREEN	0	CERTIFIED PERSONAL SERVICE AGENCY
WARREN	RAINBOW, LLC	BOWLING GREEN	0	CERTIFIED PERSONAL SERVICE AGENCY
WARREN	TIMESAVERS KY, LLC	BOWLING GREEN	0	CERTIFIED PERSONAL SERVICE AGENCY

## **Purpose**

The Community Needs Assessment has been completed for the following reasons:

- To help meet the hospital's mission to care for people and improve the quality of life in the communities we serve.
- To comply with the Patient Protection and Affordable Care Act of 2010 and maintain the hospital's tax-exempt status.
- To establish community health needs for the hospital's service area, to determine areas of greatest need and for the hospital to develop a strategic plan to address those needs.
- To involve internal and external resources to ensure needs of individuals are met and that efforts are not duplicated.
- To create a sustainable process for conducting Community Health Needs Assessment that can be continued for future assessments.

## **Executive Summary**

The Patient Protection and Affordable Care Act of 2010 include a provision that requires every tax exempt, non-governmental hospital to:

- Conduct a Community Health Needs Assessment (CHNA) at least every three years;
- Adopt a Strategic Implementation Plan that includes how the needs identified in the assessment are being met;
- Report to the Internal Revenue Service via its 990 tax form how it is meeting its implementation plan.

The Community Health Needs Assessment Report details the process used to collect, disseminate and prioritize the information in the assessment. The Medical Center at Franklin worked closely with local healthcare and public health leaders throughout the assessment process.

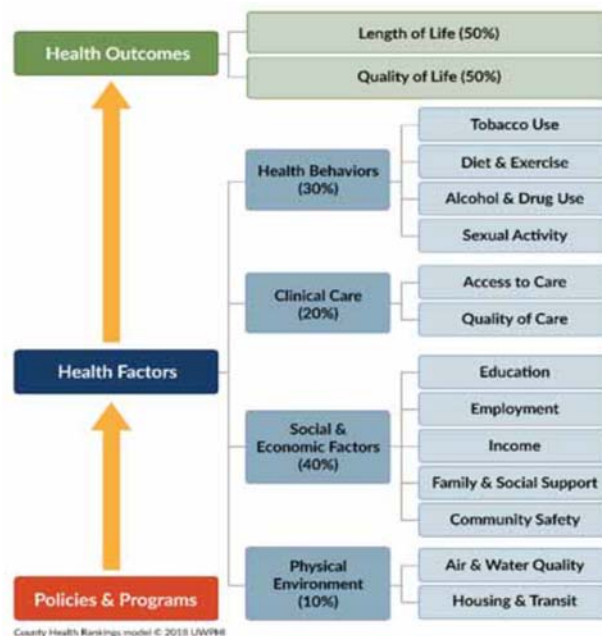
The end result of the assessment process was the development by the hospital of a strategic plan to address the major needs identified.

## Process

In September 2011, The Medical Center at Franklin joined with the Barren River District Health Department and numerous other healthcare providers, community organizations and leaders to form the Barren River Community Health Planning Council. The goal of the council was to recognize and serve those most in need in order to benefit the whole community. The Council implemented a community health needs survey and assessment process. Key healthcare needs for the community were identified followed by the development of strategic plans to meet those needs. The process used was primarily based on the Mobilizing for Action through Planning and Partnership (MAPP), which was developed by the National Association of City and County Health Officials and the Centers for Disease Control and Prevention.

Community #1 and #2 surveys were conducted in 2011 and 2015. The Medical Center at Franklin used the data collected through the surveys to develop strategic plans that addressed strengthening partnerships with community health providers and organizations, preventative care and disease management and access to care. During the fall and winter of 2014-15, the council was renamed the Barren River Initiative to Get Healthy Together (BRIGHT) Coalition.

Cycle 3 of the community assessment was initiated in the spring of 2018 by the BRIGHT coalition. BRIGHT members were restructured into four subcommittees based on the social determinants of health framework. These areas included health behaviors, clinical care, social and economic factors; and physical environment. BRIGHT members joined the group they most closely identified with professionally.



Gaps and assets for the newly formed group's area of focus were identified for each of the 10 counties. From there, each of the groups developed survey questions and provided feedback that they felt would identify the community needs in their specific focus area.

The survey was disseminated, using both paper and electronic versions, September 1 - November 31, 2018 to all 10 counties in the BRADD area. The survey was placed in freestanding health clinics, libraries, hospitals, UK Extension office locations, distributed at health fairs, distributed to over 50,000 homes via the Med Center Health WellNews publication with paid postage return, placed in the Bowling Green Daily News newspaper and provided to local housing authorities. The goal was to have as many different populations represented in the BRADD area respond to the survey as possible. The underserved populations were especially a focus as far as a desired group of survey respondents.

The surveys were analyzed by the Barren River Area Health Department. After reviewing the data collected, it was determined by the BRIGHT Coalition that there was not enough representation of the underserved population. Each of the four BRIGHT workgroups determined where the underserved population could potentially be reached and which specific topic(s) of the survey they wanted to narrow in on to collect more information. Additional questions were developed to survey the specific populations either individually or in a focus group setting. It was also determined that it would be beneficial to ask professionals that work with these populations of people to determine barriers they encounter when trying to meet the needs of the communities they serve.

### **Identified Priority Areas**

Through the survey process, the BRIGHT Coalition subcommittees identified some of the areas of need to include the following:

#### **Health Services:**

- Increase primary care access across the BRADD.
- Increase access to behavioral health and substance use disorder services across the BRADD.
- Prevention of hospital admissions.
- Improve clinical outcomes by increasing utilization of community health workers and patient navigators.
- Increase the number of syringe exchange programs (SEPs) across the BRADD.
- Develop access to medical detox beds in the BRADD hospitals.

#### **Health Equity:**

- Increase support for healthy child and family development.

- Educate residents and community organizations on available human and social services.
- Implement Health in All Policies approach across the BRADD.

Health Environment:

- Educate the public about the importance of the cleanliness of our water resources and air quality.
- Decrease commute times throughout the region.
- Increase development of mixed-use areas that improve walkability; encourage biking; provide affordable housing; elevate access to fresh, healthy foods; reduce the number of fatalities and injuries; minimize automotive traffic; increase transit use; and enhance air quality.

Healthy Lifestyles:

- Improve access to fresh and healthy food.
- Promote education on alcohol use, substance abuse and mental health awareness.
- Promote exercise and healthy living habits.

The Medical Center at Franklin intends to address the following priority health issues during 2019-2021:

- Substance Abuse
- Chronic Disease: Cardiovascular Disease; Obesity; Diabetes; Lung Disease
- Access to Care

Substance abuse will be a main focus for this community health plan period based on growing data seen within our organization's system over the past five years as well as concern from outside sources. At The Medical Center at Franklin, substance abuse with patients treated in the emergency room has increased 45% since 2015. In addition, with an increase in overdoses, the hospital staff have voiced concern about an increase in violence towards medical staff as well as increasing challenges to control pain with this population of patients. Based on these findings and a growing concern with opioid abuse spreading in the areas surrounding our region, a substance abuse committee was established in 2018 within the hospital system that also includes community partners.

A regional substance abuse forum was held in November 2018 to educate community partners as well as establish a working task force to address prevention, treatment and recovery in the area of substance abuse. These efforts will be ongoing and are inclusive of all ten counties in the BRADD region. We will continue to make efforts to expand our community partnerships and build alliances in this area.

During 2019-2021, The Medical Center at Franklin will continue to strengthen partnerships with key stakeholders to develop collaborative efforts to improve health care within Simpson County and surrounding areas. In addition, chronic disease will continue to be a focus, specifically in the areas of cardiovascular disease, diabetes, obesity and lung disease. Furthermore, efforts will continue to be made to improve access to care for health services.

**Explanation of priorities that will not be addressed at this time:**

Several issues identified by the BRIGHT Coalition subcommittees are areas that Med Center Health has ongoing actions in place, as discussed below, but are not our priority focus areas for this cycle. Other issues may be outside of the resources Med Center Health is able to provide; however, we maintain relationships with the entities addressing the issues and support their efforts through participating in events, providing education as appropriate, etc.

The priority issues listed within the Healthy Environment subcommittee including objectives of education around clean air and water, development of mixed use areas and decreased commute times are vital to the health of our community. This is an issue that Med Center Health does not have in-house resources to address but will support efforts driven by the coalition's workgroup and participate in activities as appropriate that will address these issues.

The areas identified by the Health Equity subcommittee are areas that other agencies including SOKY Workforce Development, Chamber of Commerce and Community Action Council are working on. Med Center health has ongoing relationships with these agencies, participates in job fairs and works with them to support and foster a healthy community through participation in events, meeting identified health needs as able and supporting education needs.

Health Equity identified the need to educate residents on available human and social services. Med Center Health has a referral line in place that community members can call to help identify the physician, resource or appropriate social service needed to address their need to aid with this objective.

The Health Services subcommittee identified the following areas: Increasing access to primary care, mental health and substance use disorder services across the BRADD; prevention of hospital admissions; utilization of community health workers; increasing SEPs; and increased access to medical detox beds. Med Center Health continuously works to identify and as able fill areas of need related to increased primary care access. Most recently, Med Center Health combined the Med Center Health Community Clinic which provides affordable basic medical care to uninsured and underinsured patients living in the community and Med Center Health Primary Care clinic to increase the number of providers available to care for the patient's in need. Med Center Health is working with other stakeholders to address substance use disorders. In addition, collaboration and ongoing efforts are made to reduce hospital readmissions through utilization of community health workers, etc. Overall,



the efforts in the area of increasing access to care and improving health for the communities MCH serves will remain ongoing.

## The Medical Center at Franklin Implementation Strategies for Addressing Community Health Needs 2016-2018

Through the research and recommendations from the Community Health Needs Assessment and hospital staff, administration and Board of Directors, the following strategies were implemented in addressing our community's health needs during 2016-2018.

### 1. Strengthen Partnerships With Key Community Health Providers & Organizations

The Medical Center at Franklin focuses on strengthening relationships with organizations to develop collaborative efforts to improve health care within Simpson and surrounding counties. Collaborative efforts with other organizations included a variety of initiatives such as cooperative work on educating the community with health related issues, funding initiatives, access to health screenings, etc. See below.

- Youth Action Group
  - Group met monthly to discuss activities and goals in helping with areas with prevention of substance abuse, career development for teens, etc. The Medical Center at Franklin sponsored halloween bags to the elementary schools in 2016 and 2017. The bags contained information related to the prevention of substance abuse. The total number of bags that were given were approximately 1400 each year. Participated in monthly meetings during 2016 through the fall of 2017 when the group combined efforts with another group, Get Healthy Simpson County.
  - Red Ribbon Week: Anti-Drug & Anti Bullying—provided information on anti-drugs.
- American Lung Association
  - Freedom from Smoking cessation program.
- American Cancer Society-Simpson County Chapter
  - Participated in Relay for Life fundraisers held annually during 2016-2018.
- Get Healthy Simpson County
  - Participated in monthly meetings with a group that was represented by multiple stakeholders in the community. The goal of the group is to improve the health in Simpson County. Some of the projects that were addressed during 2016-2018 included nutrition education and increased smoke-free workplaces.
  - Participated in Get Active Simpson Challenge in April 2017.
- Logan Aluminum
  - Provided screenings at industry health fair in July 2016 which included blood pressures, BMI calculations, pulmonary function tests.
  - Provided free screenings at Logan Aluminum Health Fair in July 2017, which included blood pressure and BMI calculations. Education was also provided on stroke awareness and signs/symptoms of a heart attack. Performed 220

- screenings.
- Provided free screenings at health fair in August 2018, which consisted of pulmonary function tests, blood pressures, weight/BMI and diet/nutrition education. There were 560 participants.
- Franklin-Simpson Chamber of Commerce
  - Sponsored the Community Health Fair in March of 2016-2018. Provided screenings on blood pressure, weight/BMI calculations, medication safety, pulmonary function tests, diet and nutrition, stroke screens, and performed lipid and glucose testing. In 2018, there were 300 participants.
  - Sponsored the Garden Spot Run in August of 2016-2018.
- Franklin-Simpson Board of Education
  - Provided blood pressure screenings at a health fair in October of 2017 and 2018, which included 250 participants in 2017 and 100 in 2018.
- Franklin Precision Industry
  - Provided weight, glucose, pulmonary function tests, stroke screenings and body fat screenings at health fair on April 2017, which 450 individuals participated.
- Barren River Health Department
  - Participated in Diabetes Self-Management Workshop in April 2017 and May 2018 by providing education on diabetes management. There were 16 participants in the program in 2017 and 11 participants in 2018.
- Berry Global Health Fair
  - Provided free screenings at industry health fair in September 2017. Screenings included pulmonary function tests, blood pressure, BMI calculations, education on stroke awareness and heart attack. There were 120 participants.
  - Participated in health fair in September 2018. Screenings included blood pressure, health eating education and pulmonary function tests. There were 200 participants.
- Lions Club
  - Assisted in providing a Diabetic Health Fair in February 2018, in which the hospital provided 16 blood pressure and stroke screenings. Education on diabetes was also given to participants. There were 30 participants.
  - Provided A1Cs and blood pressure screenings at Diabetic Health Fair in October 2018. There were 36 participants.
- Harmon Health Fair
  - Participated in health fair at local industry in Oct 2018. Provided blood pressure screenings, pulmonary function tests and stroke screenings to employees. There were 200 participants.
- Southcentral Kentucky Community Action
  - Presented education topic on asthma in October 2016. There were 80 participants.

- NAR-ANON
  - Host support group for those affected by someone else's addiction.

## **2. Preventative Care & Disease Management**

The focus areas included the following: Cardiovascular Disease; Obesity; Lung Cancer; Substance Abuse & Addiction; and Other.

- **Cardiovascular Disease**
  - Hosted aerobics class two days a week to the community during 2016-2018. In 2017, over 500 participants attended the class. In 2018, there were over 600 participants.
  - Performed blood pressure screenings at the following locations:
    - Vermont Thread Gage: June, August, September and October 2016; April-December 2017 with 323 participants; January-December 2018 with 392 participants.
    - Franklin-Simpson Middle School health fair: November 2016 with 250 participants.
    - Wellness calendar community screening: February, March, April, July, August and September 2016
    - Walmart: Monthly April-December 2017 with 75 participants; January- June 2018 with 20 participants.
    - Farmer's Market: June 2017 with 2 participants
  - Managed Fruit & Veggie Challenge at Vermont Thread Gage industry during May-June 2017. Employees were challenged to eat at least five servings of fruit and vegetables per day. Education was provided on healthy recipes. There were 28 participants.
  - Stroke Signs and Symptoms and Heart Attack handouts were provided in Walmart to customers and employees in July 2017 and September 2017. There were 14 people who participated in the education in July and three in September.
  - Wellness Coaching was provided at Vermont Thread Gage industry to 10 employees in December 2017. Topics included weight loss, nutrition, high blood pressure and diabetes.
  - Heart Attack Warning signs information was provided at Walmart in November 2017. There were six participants.
  - Vermont Step Challenge: An eight-week challenge for employees at Vermont Thread Gauge in April 2018. Challenge included tracking the number of steps taken each day while eating healthy. There were 12 participants.
  - Wellness Coaching was provided at Vermont Thread Gage industry in May and

June 2018. Topics included obesity, cardiovascular disease and diabetes. There were 16 participants.

- Managed a Survivor Challenge at Vermont Thread Gage industry to 35 employees in August-September 2018. Included a 7-week challenge focusing on health eating and exercise.
- Refer to #1 (Strengthening Partnerships with Health Care Providers and Organizations) with health fair screenings that were performed.

- **Obesity**

- Managed a *Choose to Lose* program with the City of Franklin during April-June 2016 and with Franklin Bank & Trust in March 2016.
- Sponsored the Garden Spot 5K Run/Walk thru the Franklin-Simpson Chamber of Commerce in August of 2016, 2017 and 2018. The number of participants each year ranged from 800-1039.
- Managed *Fruit & Veggie Challenge* at Vermont Thread Gage industry during May-June 2017. Employees were challenged to eat at least five servings of fruit and vegetables per day. Education was provided on healthy recipes. There were 28 participants.
- Managed a *Choose to Lose* program at Vermont Thread Gauge during October and November 2016. There were 194 in attendance.
- Hosted aerobics class two days a week to the community during 2016-2018. In 2017, over 500 participants attended the class. In 2018, there were over 600 participants.
- Wellness Coaching was provided at Vermont Thread Gage industry in May and June 2018. Topics included obesity, cardiovascular disease and diabetes. There were 16 participants.
- Managed a Survivor Challenge at Vermont Thread Gage industry to 35 employees in August-September 2018. Included a 7-week challenge focusing on healthy eating and exercise.
- Vermont Step Challenge: An eight-week challenge for employees at Vermont Thread Gauge in April 2018. Challenge included tracking the number of steps taken each day while eating healthy. There were 12 participants.
- Refer to #1 (Strengthening Partnerships with Health Care Providers and Organizations) with health fair screenings that were performed.

- **Lung Cancer**

- Offered low-dose CT scans for lung cancer screenings. Between 2016-2018, 58 scans were performed.

- Continue to support a smoke-free community by remaining a smoke-tobacco free campus.
  - Conducted *Freedom from Smoking* class at Vermont Thread Gauge in August 2017 and November-December 2017. There were 30 participants in these classes.
  - Conducted *Freedom from Smoking* class at the Franklin Housing Authority during April-June 2018. There were 12 participants.
  - Refer to #1 (Strengthening Partnerships with Health Care Providers and Organizations) with health fair screenings that were performed.
- **Substance Abuse and Addiction**
    - Provided free drug kits to Simpson County Sheriff's office for parents to test children, January-March 2016. Approximately 100 kits were provided. Parents were asked to fill out surveys to provide feedback once they received a kit. There were no surveys that were returned.
    - Education provided at the Farmer's Market in June and July 2016 on medication management. Topic included safe use of medications.
    - Participated in a Substance Use Disorder Regional Forum sponsored by the Bright Coalition, November 2018.
    - Hosted NAR-ANON support groups meetings.
    - Refer to #1 (Strengthening Partnerships with Health Care Providers and Organizations) with health fair screenings that were performed.
- **Other**
    - Community Wellness Calendar events: During 2016-2018, provided monthly calendars for the community to participate in various screenings and activities. Examples of screenings included hearing screenings, blood pressure screenings, weight/BMI/body fat screenings, posture screenings, balance screenings, depression screenings, etc... Activities on the calendars included aerobics, support groups (i.e.: Diabetes; stroke), education classes, healthy meal classes, etc...
    - Participated with the Franklin-Simpson school system in the *Back to School Bash*, August 2016 where students were educated on backpack safety to prevent back injuries.
    - Provided education to customers at Walmart on Sun/Heat Safety in July 2017. There were 10 participants.
    - Refer to #1 (Strengthening Partnerships with Health Care Providers and Organizations) with health fair screenings that were performed.

### **3. Access to Care**

- Offered physician services to employees of CHC through the Employee Health Clinic
- Began telemedicine services in July 2017 for outpatient psych. In January 2018, expanded telemedicine services to include inpatient consults with Infectious Disease specialists. In September 2018, provided telemedicine to industries with occupational injuries.
- CHC acquired Medical Center Health Franklin primary care practice in Franklin in January 2017. An extension site was added at Franklin Simpson Middle School in August 2018 to provide primary care services to students and employees.
- CHC added an outpatient physical therapy clinic named Orthopedics Plus Physical Therapy in November 2017. The clinic assists with access to physical therapy if insurance does not reimburse at the outpatient hospital setting.
- The organization provided an onsite nurse practitioner to a local industry, New Mather Industries.
- The Medical Center at Franklin added specialty clinics for the following areas:
  - ENT in August 2017. Clinic began with office hours 4.5 days a week.
  - Orthopedics in September 2017. Clinic operated ½ day each week.

Patients that are seen at these clinics may also utilize The Medical Center at Franklin for surgery if needed.

## The Medical Center at Franklin Implementation Strategies for Addressing Community Health Needs 2019-2021

Through the research and recommendations from the Community Health Needs Assessment and hospital staff, administration and Board of Directors, the following strategies will guide The Medical Center at Franklin leadership in addressing our community's health needs over the next three years.

### 1. Continued Partnerships With Key Community Health Providers & Organizations

Key partners and programs are listed below:

- Simpson County Health Department
  - Get Healthy Simpson County Coalition
    - Drug prevention programs
    - Nutrition education
    - Promote smoke-free workplaces in businesses and schools
- American Red Cross
  - Sponsor blood drives
- South-central Kentucky Community Action
  - Community Actions & Commodities Distribution Day
- Barren River Health Department
  - Diabetes Prevention Program
  - Barren River Initiative to Get Healthy Together (BRIGHT) Coalition
  - Community Health Worker program
- Franklin Simpson Board of Education
  - Onsite primary care clinic
  - School health fairs
- Franklin Simpson Chamber of Commerce
  - Sponsor Garden Spot 5k Run/Walk
  - Sponsor Community Health Fair
- American Cancer Society—Simpson County Chapter
  - Relay for Life fundraisers
- American Lung Association
  - Freedom from Smoking cessation program



- Hosparus Health of Barren River
  - Provides the best possible quality of life for patients and provides support to the families until the end of life
- Hospice of Southern Kentucky
  - Provides support that enables the terminally ill to spend their final days in a pain-free and dignified home environment
- Heart Disease & Stroke Prevention Task Force
- Simpson County Emergency Operations Committee (EOC)
  - Participation in local county EOC
- Local Industries
  - Participation in health fairs
  - Wellness activities
  - Wellness boards
- National Stroke Association
  - LEAP program for stroke survivors (Lifelong Education & Advocacy Program)
- American Heart Association and American College of Cardiology
  - Hands only CPR training in the community
  - Early Heart Attack Care

## 2. Implementation Strategies

### Identified Need: Substance Abuse and Addiction

#### Goals:

- Reduce the incidence of drug related overdoses and deaths.
- Promote abstinence among youth through prevention efforts.
- Provide long- term solutions and care to users seeking treatment and recovery for substance abuse.

#### Partners:

- Barren River District Health Department
- Franklin-Simpson Schools
- Get Healthy Simpson Coalition
- NAR-ANON
- Bowling Green Agency for Substance Abuse Policy

**Plan:**

- Collaborate with other providers and organizations treatment and prevention of substance abuse.
- Educate and empower the community with knowledge related to substance abuse, who is at risk and resources available.
- Explore with our community partners how to fill identified gaps in treatment and recovery in our region.
- Educate and provide tools to providers to safely prescribe opioids and how to monitor usage.
- Continue to host NAR-ANON support group meetings.

**Identified Need: Cardiovascular Disease**

**Goals:**

- Increase knowledge of onset of heart attack or stroke symptoms.
- Increase participation of smoking cessation classes.
- Assist with reducing health risks for heart attack or stroke.

**Partners:**

- National Stroke Association
- Barren River District Health Department
- Kentucky Heart Disease and Stroke Prevention Task Force
- American Heart Association and American College of Cardiology

**Plan:**

- Offer blood pressure screenings through various venues to the community.
- Provide education to the community through wellness calendar events and local activities.
- Market the Freedom from Smoking program to the community and local industries.
- Sponsor the Franklin Simpson Garden Spot 5K Run/Walk and the Community Health Fair.

**Identified Need: Obesity**

**Goal:**

- Increase knowledge of healthy eating habits to assist with reducing obesity with children and adults.
- Assist with reducing obesity rates with children and adults.

**Partners:**

- Barren River District Health Department
- Medicaid Managed Care Program/Case Management
- Franklin Simpson Boys & Girls Club
- Franklin Simpson Schools
- Local Industries
- Franklin Simpson Chamber of Commerce

**Plan:**

- Promote the offering of Medical Nutrition Therapy by a Registered Dietitian at the Med Center Health Health & Wellness.
- Continue offering aerobics classes to the community.
- Provide nutrition education and body fat analysis to local industries through the Industrial Solutions Program.
- Provide education and screenings at community/industry health fairs.
- Collaborate with the Boys & Girls Club on health education through their Garden Program.
- Sponsor the Franklin Simpson Garden Spot 5K Run/Walk and the Community Health Fair.

**Identified Need: Diabetes**

**Goal:**

- Assist with reducing the incidence of type 2 diabetes in the community.
- Provide education on prevention of diabetes.

**Partners:**

- Barren River District Health Department



- Medicaid Managed Care Program/Case Management
- Franklin-Simpson Chamber of Commerce
- Local Lion's Club
- Local Industries

**Plan:**

- Collaborate with the Lion's Club with the local Diabetic Health Fair.
- Provide education on diabetes and diabetes prevention at local industries, health fairs and community events.
- A Diabetes Prevention Program will be offered in coordination with the Barren River District Health Department in Simpson County.
- Blood glucose screenings will be offered at the Community Health Fair.
- Collaborate with the Barren River District Health Department on the Diabetes Self Awareness workshop.
- Sponsor the Franklin Simpson Garden Spot 5K Run/Walk and the Community Health Fair.

**Identified Need: Lung Disease**

**Goal:**

- Assist with decreasing use of tobacco products.
- Increase the participation in Freedom from Smoking program.
- Increase education to the community on Lung Disease.

**Partners:**

- American Lung Association
- Barren River District Health Department
- American Cancer Society-Warren County Chapter
- Get Healthy Simpson County Coalition

**Plan:**

- Participate in fundraisers for the Relay for Life in Simpson County.
- Continue to offer low-dose CT scans for lung cancer screenings.
- Collaborate with the Get Healthy Simpson County Coalition on increasing smoke-free environments in businesses and schools.
- Provide education on risk factors for lung disease at community health fairs,

industries, and community events.

**Identified Need: Access to Care**

**Goal:**

- Recruit primary care providers in Simpson County.
- Expand telemedicine services to provide access to specialists.
- Research the need for onsite primary care at local industries.
- Increase knowledge of resources available in mental health.
- Research possible access options for the treatment of substance abuse.

**Partners:**

- Medical Center Primary Care-Franklin
- Commonwealth Health Corporation
- Barren River District Health Department
- Franklin Simpson Schools
- Bowling Green ASAP

**Plan:**

- Continue recruitment efforts to add primary care providers in Simpson County.
- Continue to work with providers in expanding telemedicine services with various specialists such as psychiatry, orthopedics, etc...
- Work with the organizations WorkLife Program to determine needs to provide onsite primary care services at local industries.
- Work with other stakeholder groups to provide education to the community on resources available in mental health.
- Work with the Barren River District Health Department, Bowling Green ASAP and other organizations to research treatment option needs for substance abuse.
- Assist other organizations in providing education to the community on substance abuse and prevention.

### **Communication Plan**

The Medical Center at Franklin will publish the Community Health Needs Assessment inclusive of the survey results and strategic plan on its website and make hard copies available to the public upon request. In addition, the results will be added in the hospital's annual IRS tax form 990 submission.

## **Conclusions**

The Medical Center at Franklin has been committed to the Community Health Needs Assessment throughout the process. It has served to strengthen relationships with other providers of healthcare and organizations in the community. The surveys conducted lead to data driven identification of key community health needs. The hospital has developed a detailed strategic plan to address these needs over the next three years with the ultimate goal being to improve the quality of life of the individuals in the community we serve.