



THE MEDICAL CENTER AT BOWLING GREEN

# Community Health Needs Assessment & Strategic Implementation Plan for 2019-2021



**Med Center Health**

The Medical Center at Bowling Green



**The Medical Center at Bowling Green**  
**Community Health Needs Assessment & Strategic**  
**Implementation Plan**

**Table of Contents**

<b>Organizational Description</b>	<b>3</b>
<b>Service Area Description</b>	<b>7</b>
<b>Existing Licensed Healthcare Resources in BRADD Area</b>	<b>8</b>
<b>Community Demographics</b>	<b>17</b>
<b>Mission, Vision &amp; Values</b>	<b>20</b>
<b>Purpose &amp; Executive Summary</b>	<b>21</b>
<b>Process</b>	<b>22</b>
<b>Identified Priority Areas</b>	<b>24</b>
<b>Identified Priority Areas not addressed at this time</b>	<b>27</b>
<b>Strategic Implementation Plan for Hospital</b>	<b>28</b>
<b>Partnerships with Key Community Organizations</b>	<b>28</b>
<b>Implementation Strategies</b>	<b>29</b>
<b>Communication Plan</b>	<b>32</b>

## Organizational Description

Bowling Green-Warren County Hospital Corporation (the "Corporation"), is a non-stock, nonprofit Kentucky corporation that operates a 337 bed hospital facility in Bowling Green, Kentucky under the name "The Medical Center at Bowling Green" and since October 1996, a 25 bed critical access hospital and 110 bed nursing home facility in Scottsville, Kentucky under the name "The Medical Center at Scottsville." In addition, since January 2016, the Corporation has operated a 25 bed critical access acute care hospital in Horse Cave, Kentucky under the name "The Medical Center at Caverna." The three facilities are part of one corporation but are separately licensed by the State of Kentucky. References herein to "The Medical Center" refer to the combined facilities.

The Corporation has been determined by the Internal Revenue Service (the "IRS") to be a charitable organization as described in Section 501(c)(3) of the Internal Revenue Code of 1986, as amended (the "Code") and is exempt from federal income taxation by virtue of Sections 501(a) and 501(c)(3) of the Code.

Together with another area non-profit acute care hospital corporation, the Corporation is an equal owner of the Barren River Regional Cancer Center Inc., (Center) an outpatient radiation therapy care service in Southcentral Kentucky organized as a charitable organization as described in Section 501(c)(3) of the Internal Revenue Code of 1986, as amended (the "Code") and is exempt from federal income taxation by virtue of Sections 501(a) and 501(c)(3) of the Code.

The Corporation is the sole member of Medical Center EMS, LLC (EMS), Medical Center Pharmacy of Bowling Green, LLC (Riverside) and Enspire Quality Partners, LLC (Enspire). EMS provides ambulance services in Warren County, Kentucky. Riverside offers retail pharmacy services in Bowling Green, Kentucky. Enspire is a Clinically Integrated Network of healthcare providers, working together under a physician-led structure to improve population health, improve patient experience and reduce the cost of healthcare. The Corporation is both the limited partner and a general partner in the Medical Plaza Partners, LLP which provides on-campus space for hospital departments and other non-affiliate medical-related services.



The Corporation is owned and controlled by Commonwealth Health Corporation, Inc., a non-stock, nonprofit Kentucky corporation (“CHC”), under a holding company arrangement which was established in 1984. CHC has been determined by the IRS to be a charitable organization as described in Section 501(c)(3) of the Internal Revenue Code of 1986, as amended (the “Code”) as is exempt from federal income taxation by virtue of Sections 501(a) and 501(c)(3) of the Code.

The Medical Center at Bowling Green was originally founded as the City Hospital in 1926. In 1949, the city hospital became jointly owned by the City of Bowling Green, Kentucky and the County of Warren, Kentucky and was operated by the Bowling Green-Warren County Hospital Commission (the “Commission”) as a public hospital. In 1977, the Corporation became the successor to the Commission with a stated purpose of leasing and operating the existing Commission facilities and financing, constructing and operating a new hospital facility.

The Medical Center at Bowling Green has undergone a series of expansions and has grown to be the largest and most comprehensive hospital facility in Southcentral Kentucky, offering a wide range of acute care and specialty services.

In 1980, The Medical Center at Bowling Green moved into a new six-story, state-of-the-art facility occupying 298,000 square feet on a 17-acre campus. Since 1980, because of an expanding demand for inpatient and outpatient services, several additions to The Medical Center at Bowling Green have been made and both clinical and patient areas have been renovated and modernized.

In 1982, a cancer treatment center was added. In 1984 and again in 1990, the outpatient service area was expanded.

In 1985, the Corporation assisted an affiliate, Commonwealth Medical Plaza Corp., in developing a 29,156 square foot medical office building adjacent to The Medical Center at Bowling Green. Today, the Corporation holds a 92% equity interest in the limited partnership that owns the building.

In 1992, a magnetic resonance imaging facility was acquired adjacent to The Medical Center at Bowling Green campus. In 1997, the Corporation built a 50,000 square foot medical office building adjacent to its outpatient service area.

In 1996, the Corporation acquired the hospital and nursing facility in Scottsville, Kentucky now known as The Medical Center at Scottsville from Health Endowment Properties. The building is located on an approximately 13 acre campus and now totals approximately 106,500 square feet.

In 2004, The Medical Center at Bowling Green completed new construction of approximately 59,500 square feet to house an expanded new ambulatory surgical area and an expanded emergency department. The two floor structure was constructed across High Street and is connected to the main hospital via an elevated floor housing the post anesthesia care unit. In addition, renovation of 23,000 square feet of the existing facility was completed to relocate and serve the growing needs of the Diagnostic Imaging Center and surgical areas.

In 2009, The Medical Center at Bowling Green completed new construction consisting of two additional floors above the existing Emergency Department and Ambulatory Surgery wing of The Medical Center at Bowling Green. The new additional floors are supported by ancillary services across the connected bridge way. The project includes construction of a new egress stairwell to serve the new third and fourth floors only. The existing second floor is augmented with approximately 953 square feet of new infill construction adjacent to the new stairwell. The new third and fourth floors each contain approximately 23,238 square feet of space and accommodate 24 acute inpatient beds each. This expansion provided space to allow The Medical Center at Bowling Green to bring on-line its entire complement of 337 licensed beds.

In 2012, The Medical Center acquired Western Kentucky Diagnostic Imaging (“WKDI”) to expand the hospital’s diagnostic imaging capacity.

In August 2013, The Medical Center completed and opened an approximately 73,471 square foot, three story building known as The Medical Center - WKU Health Sciences Complex. Approximately 80% of the building is leased to Western Kentucky University under a 25 year “triple net” lease. The building houses the University’s School of Nursing and Doctor of Physical Therapy programs. The Medical Center uses the remainder of the building for staff education purposes, including bed labs with state-of-the-art equipment such as patient simulators, including an iStan virtual patient.



In 2016, the Corporation acquired the hospital in Horse Cave, Kentucky, now known as The Medical Center at Caverna. The buildings located on the approximately 37 acre campus total approximately 41,000 square feet.

In October 2018, The Medical Center opened a new two story building with 48,000 square feet of office space adjacent to a five-level, 832-space parking structure. The building includes ground floor office space for The Medical Center and 24,000-square-feet on the second floor for the newly opened University of Kentucky College of Medicine-Bowling Green campus. The medical school provides a home to faculty, staff and the inaugural class of 30 students. Amenities of the second floor include a computer lab, two large classrooms, four multi-purpose rooms, six small group rooms and eight simulation and standardized patient rooms.

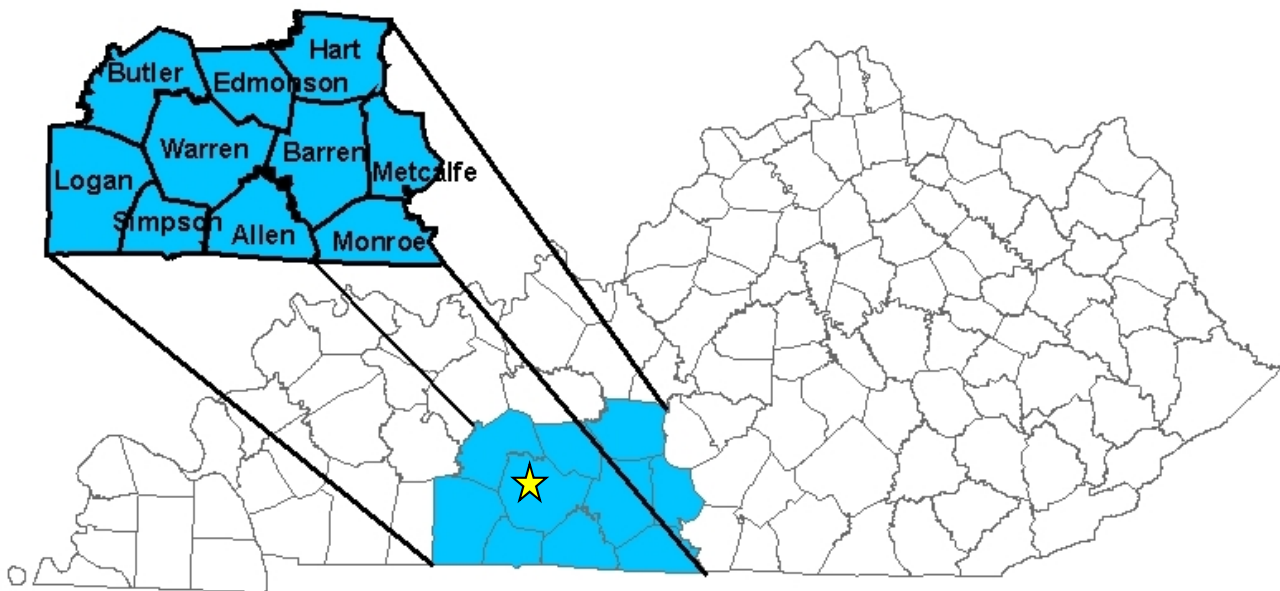
Today, The Medical Center at Bowling Green's buildings have expanded to contain a total of approximately 578,000 square feet of space located on its approximately 56 acre campus.

## ***Service Area Description***

The primary service area for The Medical Center is Warren County and the contiguous counties of Allen, Barren, Butler, Edmonson, Logan and Simpson, as of the July 1, 2017 US Census estimate, had a population of approximately 303,327. Bowling Green, Kentucky, where the Corporation's major facilities are located, is the county seat of Warren County. According to the July 1, 2017 U.S. Census estimate, Bowling Green had a population of approximately 67,067 and Warren County had an estimated population of 128,845. Scottsville, Kentucky, where the Corporation's Scottsville Facility is located, is the county seat of Allen County, Kentucky, which had a population of approximately 20,933 as of the July 1, 2017 U.S. census population estimates.

## **The Medical Center at Bowling Green CHNA Service Area**

 The Medical Center at Bowling Green



## Existing Licensed Healthcare Resources in BRADD Area

\*\*\* Kentucky Cabinet for Health and Family Services. *OIG Directories.*

### Long Term Care Facilities

County	Facility Name	City	Certified Beds	Type
ALLEN	CAL TURNER REHAB AND SPECIALTY CARE	SCOTTSVILLE	110	LONG TERM CARE
BARREN	SIGNATURE HEALTHCARE OF GLASGOW REHAB & WELLNESS CENTER	GLASGOW	68	LONG TERM CARE
BARREN	GLASGOW STATE NURSING FACILITY	GLASGOW	100	LONG TERM CARE
BARREN	GLENVIEW HEALTH CARE FACILITY	GLASGOW	60	LONG TERM CARE
BARREN	NHC HEALTHCARE, GLASGOW	GLASGOW	194	LONG TERM CARE
BARREN	T J SAMSON COMMUNITY HOSPITAL	GLASGOW	16	LONG TERM CARE
EDMONSON	EDMONSON CENTER	BROWNSVILLE	74	LONG TERM CARE
HART	SIGNATURE HEALTHCARE OF HART COUNTY REHAB & WELLNESS CENTER	HORSE CAVE	104	LONG TERM CARE
LOGAN	AUBURN HEALTH CARE	AUBURN	66	LONG TERM CARE
LOGAN	CREEKWOOD PLACE NURSING & REHAB CENTER, INC	RUSSELLVILLE	104	LONG TERM CARE
METCALFE	METCALFE HEALTH CARE CENTER	EDMONTON	71	LONG TERM CARE
MONROE	SIGNATURE HEALTHCARE OF MONROE COUNTY REHAB AND WELLNESS CENTER	TOMPKINSVILLE	104	LONG TERM CARE
SIMPSON	FRANKLIN-SIMPSON NURSING AND REHABILITATION CENTER	FRANKLIN	98	LONG TERM CARE
WARREN	BOWLING GREEN NURSING AND REHABILITATION CENTER	BOWLING GREEN	66	LONG TERM CARE
WARREN	CHRISTIAN HEALTH CENTER	BOWLING GREEN	39	LONG TERM CARE
WARREN	COLONIAL CENTER	BOWLING GREEN	48	LONG TERM CARE
WARREN	GREENWOOD NURSING & REHABILITATION CENTER	BOWLING GREEN	128	LONG TERM CARE
WARREN	HOPKINS CENTER	WOODBURN	50	LONG TERM CARE
WARREN	MAGNOLIA VILLAGE	BOWLING GREEN	60	LONG TERM CARE
WARREN	SIGNATURE HEALTHCARE OF BOWLING GREEN	BOWLING GREEN	176	LONG TERM CARE



BARREN	BARREN COUNTY NURSING AND REHABILITATION	GLASGOW	94	LONG TERM CARE
--------	--	---------	----	----------------

Source: [https://chfs.ky.gov/agencies/os/oig/dhc/Documents/Directories/Long\\_Term\\_Care\\_Directory.pdf](https://chfs.ky.gov/agencies/os/oig/dhc/Documents/Directories/Long_Term_Care_Directory.pdf)

### Hospitals

County	Facility Name	City	Certified Beds	Type
ALLEN	THE MEDICAL CENTER AT SCOTTSVILLE	SCOTTSVILLE	25	CRITICAL ACCESS HOSPITAL
BARREN	TJ SAMSON COMMUNITY HOSPITAL	GLASGOW	180	ACUTE
HART	THE MEDICAL CENTER AT CAVERNA	HORSE CAVE	25	CRITICAL ACCESS HOSPITAL
LOGAN	LOGAN MEMORIAL HOSPITAL	RUSSELLVILLE	75	ACUTE
MONROE	MONROE COUNTY MEDICAL CENTER	TOMPKINSVILLE	49	ACUTE
SIMPSON	THE MEDICAL CENTER AT FRANKLIN	FRANKLIN	25	CRITICAL ACCESS HOSPITAL
WARREN	TRISTAR GREENVIEW REGIONAL HOSPITAL	BOWLING GREEN	211	ACUTE
WARREN	RIVENDELL BEHAVIORAL HEALTH SERVICES	BOWLING GREEN	125	PSYCHIATRIC
WARREN	SOUTHERN KY REHAB HOSPITAL	BOWLING GREEN	60	REHAB
WARREN	THE MEDICAL CENTER AT BOWLING GREEN	BOWLING GREEN	337	ACUTE

Source: [https://chfs.ky.gov/agencies/os/oig/dhc/Documents/Directories/Hospital\\_Directory\\_By\\_County.pdf](https://chfs.ky.gov/agencies/os/oig/dhc/Documents/Directories/Hospital_Directory_By_County.pdf)

### Ambulatory Care Clinic

County	Facility Name	City	Certified Beds	Type
WARREN	MEDICAL CENTER URGENTCARE	BOWLING GREEN	0	AMBULATORY CARE CLINIC
BARREN	T J SAMSON AMBULATORY CARE CENTER	GLASGOW	0	AMULATORY CARE CLINIC
BARREN	MCPEAK SURGERY CENTER	GLASGOW	0	AMBULATORY SURGICAL CENTER
WARREN	LIFESKILLS	BOWLING GREEN	0	COMMUNITY MENTAL HEALTH CENTER
WARREN	GRAVES GILBERT CLINIC WALK-IN CARE	BOWLING GREEN	0	AMBULATORY CARE CLINIC

Source: [https://chfs.ky.gov/agencies/os/oig/dhc/Documents/Directories/AODE\\_BHSO\\_Directory.pdf](https://chfs.ky.gov/agencies/os/oig/dhc/Documents/Directories/AODE_BHSO_Directory.pdf)

### Adult Day Health

County	Facility Name	City	Certified Beds	Type
LOGAN	ACTIVE DAY OF RUSSELLVILLE	RUSSELLVILLE	0	ADULT DAY HEALTH
WARREN	BARREN RIVER ADULT DAY CARE CENTER	BOWLING GREEN	0	ADULT DAY HEALTH

METCALFE	SHUFFETT'S ADULT DAY CARE, INC	EDMONTON	0	ADULT DAY HEALTH
METCALFE	GOLDEN YEARS ADULT DAY HEALTH CENTER	EDMONTON	0	ADULT DAY HEALTH
HART	THE OLE HOMEPLACE ADULT DAY HEALTH CARE CENTER-HART	MUNFORDVILLE	0	ADULT DAY HEALTH
WARREN	ACTIVE DAY OF BOWLING GREEN	BOWLING GREEN	0	ADULT DAY HEALTH
MONROE	MONROE COUNTY MEDICAL CENTER	TOMPKINSVILLE	0	ADULT DAY HEALTH
EDMONSON	ACTIVE DAY OF BROWNSVILLE	BROWNSVILLE	0	ADULT DAY HEALTH
BARREN	JUST FAMILY, INC	GLASGOW	0	ADULT DAY HEALTH

Source: [https://chfs.ky.gov/agencies/os/oig/dhc/Documents/Directories/AODE\\_BHSO\\_Directory.pdf](https://chfs.ky.gov/agencies/os/oig/dhc/Documents/Directories/AODE_BHSO_Directory.pdf)

### Dialysis

County	Facility	City	Certified Beds	Type
WARREN	FRESENIUS MEDICAL CARE BOWLING GREEN WARREN COUNTY	BOWLING GREEN	0	END STAGE RENAL DIALYSIS
WARREN	BOWLING GREEN HOME THERAPIES	BOWLING GREEN	0	END STAGE RENAL DIALYSIS
WARREN	DIALYSIS OF WARREN COUNTY	BOWLING GREEN	0	END STAGE RENAL DIALYSIS
BARREN	T J SAMSON KIDNEY CARE	GLASGOW	0	END STAGE RENAL DIALYSIS
WARREN	LOST RIVER DIALYSIS	BOWLING GREEN	0	END STAGE RENAL DIALYSIS
SIMPSON	FRESENIUS KIDNEY CARE RED OAK	FRANKLIN	0	END STAGE RENAL DIALYSIS
BARREN	FRESENIUS MEDICAL CARE GLASGOW	GLASGOW	0	END STAGE RENAL DIALYSIS

Source: [https://chfs.ky.gov/agencies/os/oig/dhc/Documents/Directories/AODE\\_BHSO\\_Directory.pdf](https://chfs.ky.gov/agencies/os/oig/dhc/Documents/Directories/AODE_BHSO_Directory.pdf)

### Home Health

County	Facility	City	Certified Beds	Type
WARREN	RAINBOW, LLC	BOWLING GREEN	0	HOME HEALTH AGENCY
MONROE	LIFELINE HOME HEALTH	TOMPKINSVILLE	0	HOME HEALTH AGENCY
BARREN	T. J. SAMSON COMM HOSP HOME CARE PROGRAM	GLASGOW	0	HOME HEALTH AGENCY
WARREN	THE MEDICAL CENTER HOME CARE PROGRAM	BOWLING GREEN	0	HOME HEALTH AGENCY
WARREN	LIFELINE HEALTH CARE OF WARREN	BOWLING GREEN	0	HOME HEALTH AGENCY
LOGAN	LIFELINE HEALTH CARE OF LOGAN	RUSSELLVILLE	0	HOME HEALTH AGENCY

Source: [https://chfs.ky.gov/agencies/os/oig/dhc/Documents/Directories/AODE\\_BHSO\\_Directory.pdf](https://chfs.ky.gov/agencies/os/oig/dhc/Documents/Directories/AODE_BHSO_Directory.pdf)

**Palliative and Hospice Care**

County	Facility	City	Certified Beds	Type
WARREN	HOSPICE OF SOUTHERN KENTUCKY, INC	BOWLING GREEN	10	HOSPICE
BARREN	T J SAMSON COMMUNITY HOSPITAL HOME CARE HOSPICE	GLASGOW	0	HOSPICE
WARREN	HOSPARUS OF BARREN RIVER	BOWLING GREEN	0	HOSPICE

Source: [https://chfs.ky.gov/agencies/os/oig/dhc/Documents/Directories/AODE\\_BHSO\\_Directory.pdf](https://chfs.ky.gov/agencies/os/oig/dhc/Documents/Directories/AODE_BHSO_Directory.pdf)

**Physician Offices/Labs**

County	Facility	City	Certified Beds	Type
HART	CAVERNA PRIMARY CARE CLINIC	HORSE CAVE	0	PHYSICIAN OFFICE/LAB
BUTLER	ALL EASE CHIROPRACTIC, LLC	MORGANTOWN	0	PHYSICIAN OFFICE/LAB
WARREN	A NEW START	BOWLING GREEN	0	PHYSICIAN OFFICE/LAB
WARREN	ANSON HSIEH	BOWLING GREEN	0	PHYSICIAN OFFICE/LAB
EDMONSON	A PLUS FAMILY HEALTHCARE	BROWNSVILLE	0	PHYSICIAN OFFICE/LAB
WARREN	BLUEGRASS MEDICAL CARE	BOWLING GREEN	0	PHYSICIAN OFFICE/LAB
WARREN	ASSOCIATE IN PHYSICIAN SERVICES	BOWLING GREEN	0	PHYSICIAN OFFICE/LAB
ALLEN	ASSOCIATES IN PHYSICIAN SERVICES	SCOTTSVILLE	0	PHYSICIAN OFFICE/LAB
ALLEN	BLOINK CHIROPRACTIC	SCOTTSVILLE	0	PHYSICIAN OFFICE/LAB
WARREN	BLUEGRASS HEALTH CLINIC	BOWLING GREEN	0	PHYSICIAN OFFICE/LAB
WARREN	BOWLING GREEN DERMATOLOGY & SKIN CANCER SPECIALIST	BOWLING GREEN	0	PHYSICIAN OFFICE/LAB
WARREN	BOWLING GREEN INTERNAL MEDICINE	BOWLING GREEN	0	PHYSICIAN OFFICE/LAB
WARREN	BOWLING GREEN VA OUTPATIENT CLINIC	BOWLING GREEN	0	PHYSICIAN OFFICE/LAB
WARREN	BREIWA, WARE & JESKIE	BOWLING GREEN	0	PHYSICIAN OFFICE/LAB
WARREN	BRIAN K MACY MD	BOWLING GREEN	0	PHYSICIAN OFFICE/LAB
BUTLER	BUTLER COUNTY FAMILY CARE	MORGANTOWN	0	PHYSICIAN OFFICE/LAB
BARREN	CARDIOLOGY ASSOCIATES OF SOUTHERN KY	GLASGOW	0	PHYSICIAN OFFICE/LAB
WARREN	CAREHERE HEALTH CENTER	BOWLING GREEN	0	PHYSICIAN OFFICE/LAB
HART	CAVERNA PRIMARY CARE CLINIC	HORSE CAVE	0	PHYSICIAN OFFICE/LAB
ALLEN	COMMONWEALTH HEALTH CORPORATION	SCOTTSVILLE	0	PHYSICIAN OFFICE/LAB
WARREN	COMPREHENSIVE PAIN SPECIALISTS	BOWLING GREEN	0	PHYSICIAN OFFICE/LAB
SIMPSON	COMPTON & COMPTON EYE CARE, PLLC	FRANKLIN	0	PHYSICIAN OFFICE/LAB
WARREN	DAVID C NAPIER MD	BOWLING GREEN	0	PHYSICIAN OFFICE/LAB



LOGAN	DR CHARLES MATHIS OFFICE	RUSSELLVILLE	0	PHYSICIAN OFFICE/LAB
SIMPSON	DR SANDA CRNKIC DBA SPINECARE CHIROPRACTIC	FRANKLIN	0	PHYSICIAN OFFICE/LAB
BARREN	EAST SIDE FAMILY MEDICAL	GLASGOW	0	PHYSICIAN OFFICE/LAB
WARREN	ENT BOWLING GREEN	BOWLING GREEN	0	PHYSICIAN OFFICE/LAB
SIMPSON	ENT BOWLING GREEN FRANKLIN	FRANKLIN	0	PHYSICIAN OFFICE/LAB
BARREN	FAMILY PRACTICE CENTER	GLASGOW	0	PHYSICIAN OFFICE/LAB
SIMPSON	FAST PACE KENTUCKY	FRANKLIN	0	PHYSICIAN OFFICE/LAB
LOGAN	FAST PACE KENTUCKY	RUSSELLVILLE	0	PHYSICIAN OFFICE/LAB
MONROE	GAMALIEL CLINIC	GAMALIEL	0	PHYSICIAN OFFICE/LAB
HART	GGC-MUNFORDVILLE – PANDEYA	MUNFORDVILLE	0	PHYSICIAN OFFICE/LAB
BUTLER	GHAYTH M HAMMAD, MD, PSC	MORGANTOWN	0	PHYSICIAN OFFICE/LAB
BARREN	GLASGOW PEDIATRICS HEALTHCARE	GLASGOW	0	PHYSICIAN OFFICE/LAB
BARREN	GLASGOW URGENT CLINIC INC	GLASGOW	0	PHYSICIAN OFFICE/LAB
BARREN	GLASGOW TREATMENT CENTER	BARREN	0	PHYSICIAN OFFICE/LAB
WARREN	GLASSER CLINIC, THE	BOWLING GREEN	0	PHYSICIAN OFFICE/LAB
EDMONSON	GLK ENTERPRISES, LLC DBA WILKES CLINIC	BROWNSVILLE	0	PHYSICIAN OFFICE/LAB
WARREN	GRAVES GILBERT CLINIC - PEDIATRIC ASSOCIATES	BOWLING GREEN	0	PHYSICIAN OFFICE/LAB
WARREN	GRAVES GILBERT CLINIC - PRIME CARE	BOWLING GREEN	0	PHYSICIAN OFFICE/LAB
WARREN	GRAVES GILBERT CLINIC - WKU	BOWLING GREEN	0	PHYSICIAN OFFICE/LAB
SIMPSON	GRAVES GILBERT CLINIC- ADAMS	FRANKLIN	0	PHYSICIAN OFFICE/LAB
BARREN	GRAVES GILBERT CLINIC CAVE CITY WILLIAMS	CAVE CITY	0	PHYSICIAN OFFICE/LAB
WARREN	GRAVES GILBERT CLINIC FAMILY CARE CENTER	BOWLING GREEN	0	PHYSICIAN OFFICE/LAB
SIMPSON	GRAVES GILBERT CLINIC FRANKLIN RED OAK	FRANKLIN	0	PHYSICIAN OFFICE/LAB
WARREN	GRAVES GILBERT CLINIC FCC – LINDSEY WHITEMAN	BOWLING GREEN	0	PHYSICIAN OFFICE/LAB
WARREN	GRAVES GILBERT CLINIC GRANESE	BOWLING GREEN	0	PHYSICIAN OFFICE/LAB
BARREN	GRAVES GILBERT CLINIC GLASGOW	GLASGOW	0	PHYSICIAN OFFICE/LAB
WARREN	GRAVES GILBERT CLINIC HSIEH	BOWLING GREEN	0	PHYSICIAN OFFICE/LAB
WARREN	GRAVES GILBERT CLINIC HARTLAND	BOWLING GREEN	0	PHYSICIAN OFFICE/LAB
BUTLER	GRAVES GILBERT CLINIC MORGANTOWN	MORGANTOWN	0	PHYSICIAN OFFICE/LAB
WARREN	GRAVES GILBERT CLINIC- MAB	BOWLING GREEN	0	PHYSICIAN OFFICE/LAB
LOGAN	GRAVES GILBERT CLINIC LEWISBURG	LOGAN	0	PHYSICIAN OFFICE/LAB
LOGAN	GRAVES GILBERT CLINIC PSC	RUSSELLVILLE	0	PHYSICIAN OFFICE/LAB
BARREN	GRAVES GILBERT CLINIC SOUTH	GLASGOW	0	PHYSICIAN OFFICE/LAB
WARREN	Graves Gilbert Walk in Care	BOWLING GREEN	0	PHYSICIAN OFFICE/LAB



WARREN	GRAVES GILBERT CLINIC YURCHISIN	BOWLING GREEN	0	PHYSICIAN OFFICE/LAB
WARREN	GREENVIEW MEDICAL GROUP THE ALLEN CLINIC	BOWLING GREEN	0	PHYSICIAN OFFICE/LAB
WARREN	GREENWOOD URGENT CLINIC	BOWLING GREEN	0	PHYSICIAN OFFICE/LAB
WARREN	HEALTHFIRST FAMILY MEDICAL CLINIC	BOWLING GREEN	0	PHYSICIAN OFFICE/LAB
WARREN	INDAR M JHAMB MD	BOWLING GREEN	0	PHYSICIAN OFFICE/LAB
SIMPSON	INTERVENTIONAL PAIN SPECIALISTS	FRANKLIN	0	PHYSICIAN OFFICE/LAB
ALLEN	INTERVENTIONAL PAIN SPECIALISTS	SCOTTSVILLE	0	PHYSICIAN OFFICE/LAB
BARREN	INTERVENTIONAL PAIN SPECIALISTS	GLASGOW	0	PHYSICIAN OFFICE/LAB
WARREN	INTERVENTIONAL PAIN SPECIALISTS OF BOWLING GREEN	BOWLING GREEN	0	PHYSICIAN OFFICE/LAB
BARREN	JACKSON HEALTH AND WELLNESS CLINIC	GLASGOW	0	PHYSICIAN OFFICE/LAB
BARREN	JAMES P CREWS MD	CAVE CITY	0	PHYSICIAN OFFICE/LAB
WARREN	JEFFREY PURVIS MD	BOWLING GREEN	0	PHYSICIAN OFFICE/LAB
WARREN	KENTUCKY SKIN CANCER CENTER	BOWLING GREEN	0	PHYSICIAN OFFICE/LAB
WARREN	K G SAHETYA MD PSC	BOWLING GREEN	0	PHYSICIAN OFFICE/LAB
LOGAN	LAWRENCE JOSEPH GOTTS DO	RUSSELLVILLE	0	PHYSICIAN OFFICE/LAB
LOGAN	LOGAN PHYSICIANS PRACTICE LLC	RUSSELLVILLE	0	PHYSICIAN OFFICE/LAB
LOGAN	LOGAN PRIMARY CARE AUBURN	AUBURN	0	PHYSICIAN OFFICE/LAB
LOGAN	LOGAN SPECIALTY CLINIC	RUSSELLVILLE	0	PHYSICIAN OFFICE/LAB
BARREN	MEDICAL ASSOC OF SOUTHERN KENTUCKY	GLASGOW	0	PHYSICIAN OFFICE/LAB
WARREN	MED CENTER HEALTH NEUROLOGY	BOWLING GREEN	0	PHYSICIAN OFFICE/LAB
WARREN	MED CENTER PRIMARY CARE	BOWLING GREEN	0	PHYSICIAN OFFICE/LAB
SIMPSON	MEDICAL CENTER PRIMARY CARE FRANKLIN	SIMPSON	0	PHYSICIAN OFFICE/LAB
WARREN	MEDICAL CENTER URGENTCARE	BOWLING GREEN	0	PHYSICIAN OFFICE/LAB
ALLEN	MEDICAL CTR SCOTTSVILLE PRIMARY CARE CLINIC	SCOTTSVILLE	0	PHYSICIAN OFFICE/LAB
MONROE	MONROE CO MEDICAL CENTER MEDICAL PRACTICE	TOMPKINSVILLE	0	PHYSICIAN OFFICE/LAB
MONROE	MONROE FAMILY MEDICAL CENTER	TOMPKINSVILLE	0	PHYSICIAN OFFICE/LAB
WARREN	MORT SHAHMIR MD	BOWLING GREEN	0	PHYSICIAN OFFICE/LAB
HART	MUNFORDVILLE PRIMARY CARE CLINIC	MUNFORDVILLE	0	PHYSICIAN OFFICE/LAB
HART	NEPHROLOGY ASSOCIATES	MUNFORDVILLE	0	PHYSICIAN OFFICE/LAB
WARREN	NORTON CHILDREN'S MATERNAL FETAL MEDICINE	WARREN	0	PHYSICIAN OFFICE/LAB
LOGAN	P K HAYDEN LOGAN	RUSSELLVILLE	0	PHYSICIAN OFFICE/LAB
BARREN	PENDLETON FAMILY CARE	GLASGOW	0	PHYSICIAN OFFICE/LAB
LOGAN	RONALD B ELDER MD PSC	RUSSELLVILLE	0	PHYSICIAN OFFICE/LAB
WARREN	SAM KESRI MD	BOWLING GREEN	0	PHYSICIAN OFFICE/LAB

SIMPSON	SAM PERSAD MD	FRANKLIN	0	PHYSICIAN OFFICE/LAB
WARREN	SCOTT C SIMS MD	BOWLING GREEN	0	PHYSICIAN OFFICE/LAB
ALLEN	SCOTTSVILLE URGENT CLINIC	SCOTTSVILLE	0	PHYSICIAN OFFICE/LAB
WARREN	SPERO HEALTH	BOWLING GREEN	0	PHYSICIAN OFFICE/LAB
BUTLER	ST CAMILLUS URGENTCARE MORGANTOWN	MORGANTOWN	0	PHYSICIAN OFFICE/LAB
WARREN	SUNSHINE HEALTHCARE CENTER, THE	BOWLING GREEN	0	PHYSICIAN OFFICE/LAB
BARREN	T J SAMSON OUTPATIENT SERVICES UROLOGY & GI	GLASGOW	0	PHYSICIAN OFFICE/LAB
BARREN	T J HEALTH PARTNERS THE WALMART CLINIC	GLASGOW	0	PHYSICIAN OFFICE/LAB
BARREN	T J HEALTH PAVILION LABORATORY	GLASGOW	0	PHYSICIAN OFFICE/LAB
WARREN	TAPP MEDICAL CLINIC	BOWLING GREEN	0	PHYSICIAN OFFICE/LAB
WARREN	TIM LONG MD PSC	BOWLING GREEN	0	PHYSICIAN OFFICE/LAB
WARREN	THE PRIVATE PRACTICE	BOWLING GREEN	0	PHYSICIAN OFFICE/LAB
MONROE	TOMPKINSVILLE PRIMARY CARE ASSOCIATES	TOMPKINSVILLE	0	PHYSICIAN OFFICE/LAB
BARREN	TONY L HOGAN APRN HEALTH CLINIC	GLASGOW	0	PHYSICIAN OFFICE/LAB
WARREN	VERDANT HEALTHCARE	BOWLING GREEN	0	PHYSICIAN OFFICE/LAB
BARREN	WAGNER EYE CARE CENTER	GLASGOW	0	PHYSICIAN OFFICE/LAB
WARREN	WESTERN KY HEART & LUNG ASSOCIATES	BOWLING GREEN	0	PHYSICIAN OFFICE/LAB
WARREN	WILLIAM HARRIGAN MD	BOWLING GREEN	0	PHYSICIAN OFFICE/LAB
WARREN	WOMEN'S HEALTH SPECIALISTS	BOWLING GREEN	0	PHYSICIAN OFFICE/LAB
WARREN	ZIA NEUROLOGY ASSOCIATES	BOWLING GREEN	0	PHYSICIAN OFFICE/LAB
WARREN	ACCULAB	BOWLING GREEN	0	LAB
WARREN	BOWLING GREEN ASSOCIATED PATHOLOGISTS, PSC	BOWLING GREEN	0	LAB
HART	FAMILY MEDICAL CENTER OF HART COUNTY	MUNFORDVILLE	0	LAB
WARREN	GILBERT BARBEE MOORE & MCILVOY PSC	BOWLING GREEN	0	LAB
WARREN	GRANESE PATHOLOGY LABORATORY	BOWLING GREEN	0	LAB
BARREN	PATHGROUP (TJ SAMSON)	GLASGOW	0	LAB

Source: [https://chfs.ky.gov/agencies/os/oiq/dhc/Documents/Directories/AODE\\_BHSO\\_Directory.pdf](https://chfs.ky.gov/agencies/os/oiq/dhc/Documents/Directories/AODE_BHSO_Directory.pdf)

### Alcohol and Drug Treatment

County	Type	City	Certified Beds	Type
WARREN	PREVENTION LIFESKILLS, INC	BOWLING GREEN	0	ALCOHOL DRUG PREVENTION
LOGAN	ADVANCED BEHAVIORAL CONSULTANTS	RUSSELLVILLE	0	ALCOHOL AND OTHER DRUG ENTITY
BARREN	ALLIANCE COUNSELING ASSOCIATES	GLASGOW	0	ALCOHOL AND OTHER DRUG ENTITY

BUTLER	ANDREA'S MISSION	MORGANTOWN	0	ALCOHOL AND OTHER DRUG ENTITY
BUTLER	ANDREA'S MISSION FOR MEN	MORGANTOWN	0	ALCOHOL AND OTHER DRUG ENTITY
WARREN	ASAP AT WILSON PLACE	BOWLING GREEN	0	ALCOHOL AND OTHER DRUG ENTITY
HART	BLUEGRASS PROFESSIONAL COUNSELING	MUNFORDVILLE	0	ALCOHOL AND OTHER DRUG ENTITY
WARREN	CENTER FOR BEHAVIORAL HEALTH KENTUCKY, INC	BOWLING GREEN	0	ALCOHOL AND OTHER DRUG ENTITY
WARREN	COMMUNITY RESOURCE CENTER INC	BOWLING GREEN	0	ALCOHOL AND OTHER DRUG ENTITY
WARREN	COMPASS COUNSELING	BOWLING GREEN	0	ALCOHOL AND OTHER DRUG ENTITY
WARREN	EDUCATIONAL COUNSELING OF AMERICA	BOWLING GREEN	0	ALCOHOL AND OTHER DRUG ENTITY
BARREN	FAMILY OPTIONS, INC	GLASGOW	0	ALCOHOL AND OTHER DRUG ENTITY
WARREN	HAVEN4CHANGE, INC	BOWLING GREEN	0	AODE-RESIDENTIAL FACILITY
WARREN	HILLTOP COUNSELING SERVICES	BOWLING GREEN	0	ALCOHOL AND OTHER DRUG ENTITY
WARREN	INTERVENTION COUNSELING	BOWLING GREEN	0	ALCOHOL AND OTHER DRUG ENTITY
WARREN	JOURNEYPURE BOWLING GREEN	BOWLING GREEN	0	ALCOHOL AND OTHER DRUG ENTITY
WARREN	LIFESKILLS, INC	BOWLING GREEN	0	ALCOHOL AND OTHER DRUG ENTITY
ALLEN	MORE TO LIFE COUNSELING, LLC	SCOTTSVILLE	0	ALCOHOL AND OTHER DRUG ENTITY
ALLEN	PARK PLACE RECOVERY CENTER FOR WOMEN	SCOTTSVILLE	0	ALCOHOL AND OTHER DRUG ENTITY
WARREN	PARK PLACE RECOVERY CENTER FOR MEN	BOWLING GREEN	0	ALCOHOL AND OTHER DRUG ENTITY
SIMPSON	PEACEFUL SOLUTIONS COUNSELING SERVICES	FRANKLIN	0	ALCOHOL AND OTHER DRUG ENTITY
WARREN	SOKY COUNSELING	BOWLING GREEN	0	ALCOHOL AND OTHER DRUG ENTITY
ALLEN	TIME OUT COMMUNITY COUNSELING & CORRECTIONAL SERVICE	SCOTTSVILLE	0	ALCOHOL AND OTHER DRUG ENTITY
WARREN	JOURNEYPURE BOWLING GREEN	BOWLING GREEN	0	BEHAVIORAL HEALTH SERVICES ORGANIZATION
WARREN	HOPEBRIDGE	BOWLING GREEN	0	BEHAVIORAL HEALTH SERVICES ORGANIZATION

Source: [https://chfs.ky.gov/agencies/os/oig/dhc/Documents/Directories/AODE\\_BHSO\\_Directory.pdf](https://chfs.ky.gov/agencies/os/oig/dhc/Documents/Directories/AODE_BHSO_Directory.pdf)

**Personal Care Home**

County	Facility	City	Certified Beds	Type
ALLEN	CORNERSTONE MANOR, LLC	SCOTTSVILLE	36	FREE STANDING PERSONAL CARE HOME
ALLEN	SCOTTSVILLE MANOR	SCOTTSVILLE	40	FREE STANDING PERSONAL CARE HOME
HART	HART COUNTY MANOR	MUNFORDVILLE	54	FREE STANDING PERSONAL CARE HOME
METCALFE	HARPER'S HOME FOR THE AGED	EDMONTON	27	FREE STANDING PERSONAL CARE HOME
SIMPSON	LEWIS MEMORIAL METHODIST HOME	FRANKLIN	23	FREE STANDING PERSONAL CARE HOME
WARREN	FERN TERRACE OF BOWLING GREEN, LLC	BOWLING GREEN	114	FREE STANDING PERSONAL CARE HOME
WARREN	THE HAVEN AT MASSEY SPRINGS	BOWLING GREEN	18	FREE STANDING PERSONAL CARE HOME

Source: [https://chfs.ky.gov/agencies/os/oig/dhc/Documents/Directories/AODE\\_BHSO\\_Directory.pdf](https://chfs.ky.gov/agencies/os/oig/dhc/Documents/Directories/AODE_BHSO_Directory.pdf)

**Personal Care Service**

County	Facility	City	Certified Beds	Type
WARREN	COMFORT KEEPERS	BOWLING GREEN	0	CERTIFIED PERSONAL SERVICE AGENCY
ALLEN	COMPANION CARE SERVICES, LLC	SCOTTSVILLE	0	CERTIFIED PERSONAL SERVICE AGENCY
WARREN	HELP AT HOME, INC	BOWLING GREEN	0	CERTIFIED PERSONAL SERVICE AGENCY
WARREN	HOME INSTEAD SENIOR CARE	BOWLING GREEN	0	CERTIFIED PERSONAL SERVICE AGENCY
WARREN	RAINBOW, LLC	BOWLING GREEN	0	CERTIFIED PERSONAL SERVICE AGENCY
WARREN	TIMESAVERS KY, LLC	BOWLING GREEN	0	CERTIFIED PERSONAL SERVICE AGENCY

Source: [https://chfs.ky.gov/agencies/os/oig/dhc/Documents/Directories/AODE\\_BHSO\\_Directory.pdf](https://chfs.ky.gov/agencies/os/oig/dhc/Documents/Directories/AODE_BHSO_Directory.pdf)



## Location: Barren River Area Development District

### Key Indicators

#### Demographics

Barren River    Kentucky

**Total Population**    303,327    4,454,189

Data Source: Population Division, U.S. Census Bureau

#### *Education Level*

County	High School Graduation	Some College
Allen	88%	49%
Barren	84%	50%
Butler	93%	42%
Edmonson	93%	47%
Hart	98%	41%
Logan	89%	49%
Metcalfe	93%	42%
Monroe	98%	48%
Simpson	94%	45%
Warren	93%	64%
Kentucky	89%	60%

Reference: County Health Rankings and Roadmaps. November 2015. Retrieved from: <http://www.countyhealthrankings.org/rankings/data/ky>

#### *Poverty Level and Median Household Income*

County	Children in Poverty, Percent	Persons in Poverty, Percent	Median Household Income in 2017 dollars 2013-2017
Allen	28%	21.8%	\$40,598
Barren	30%	22.1%	\$39,658
Butler	27%	17.1%	\$39,362
Edmonson	31%	16.9%	\$41,114
Hart	30%	20.0%	\$37,315
Logan	26%	17.9%	\$40,982
Metcalfe	37%	23.4%	\$35,594
Monroe	35%	24.3%	\$35,665
Simpson	25%	14.4%	\$44,989
Warren	23%	16.1%	\$49,508
Kentucky	24%	17.2%	\$46,535

Reference: County Health Rankings and Roadmaps. February 2019. Retrieved from: <http://www.countyhealthrankings.org/rankings/data/ky>

Reference: U. S. Census Bureau. April 1, 2010, (V2018). Retrieved from: <https://www.census.gov/quickfacts/fact/table/>

## Unemployment Rates

County	Unemployed	Labor Force	% Unemployed
Allen	300	9,095	3.3%
Barren	748	19,051	3.9%
Butler	215	5,326	4.0%
Edmonson	223	4,935	4.5%
Hart	323	8,202	3.9%
Logan	396	12,544	3.2%
Metcalfe	154	4,149	3.7%
Monroe	224	4,943	4.5%
Simpson	303	8,756	3.5%
Warren	2,064	64,398	3.2%

Reference: Kentucky Career Center. December 2018 Retrieved from: <https://kystats.ky.gov/Content/Reports/CurrentLAUS.xlsx>

## Income

	Barren River	Kentucky	USA
<u>Per Capita Personal Income</u>	\$21,782	\$24,802	\$31,177

**About the Indicator:** Mean income for every man, woman, and child in a particular group.

Data Source: [American Community Survey, U.S. Census Bureau](#)

	Barren River	Kentucky	USA
<u>Median Household Income</u>	\$42,066	\$44,811	\$57,652

Data Source: [American Community Survey, U.S. Census Bureau](#)

## Social & Behavioral Indicators

	Barren River	Kentucky
<u>Drug Arrests (per 100,000 population)</u>	2,207	1,707

Data Source: [Kentuckyhealthfacts.org](http://Kentuckyhealthfacts.org)

	Barren River	Kentucky	USA
<u>Violent Crime Offenses (per 100,000 population)</u>	171	240	469

**About the Indicator:** The number of murders, rapes and violent assaults.

Data Source: [The Health of Kentucky: A County Assessment \(Kentucky State Police Crime in Kentucky\)](#)

## Senior Health

	Barren River	Kentucky
<u>Senior Population (percent age 65 or older)</u>	15%	15%
<u>Senior Population Below Poverty Level (percent age 65 or older)</u>	14%	11%

Data Source: [American Community Survey, U.S. Census Bureau](#)

**Health Statistics and Rankings**

Health Behaviors	Kentucky	Warren	Allen	Barren	Butler	Edmonson	Hart	Logan	Metcalfe	Monroe	Simpson
Adult smoking	24%	19%	22%	23%	23%	21%	24%	22%	26%	24%	23%
Adult obesity	34%	32%	36%	32%	32%	31%	37%	35%	34%	34%	39%
Physical inactivity	28%	24%	34%	31%	36%	26%	37%	38%	32%	29%	27%
Food Insecurity	16%	10%	14%	14%	14%	16%	12%	11%	15%	14%	12%
Limited access to healthy foods	6%	6%	0%	4%	4%	1%	4%	7%	1%	1%	6%
<b>Quality of Life</b>											
Diabetes prevalence	13%	10%	14%	14%	14%	16%	12%	11%	15%	14%	12%
<b>Clinical Care</b>											
Mental health providers	520:1	470:1	1720:1	760:1	1280:1	3030:1	1550:1	1770:1	1110:1	1180:1	1060:1

Source: Robert Wood Johnson, CountyHealthRankings.org, 2018 County Rankings

Data Pulled 2/5/19

## ***Mission, Vision, and Values***

### **Mission**

The Medical Center at Bowling Green’s mission is to care for people and improve the quality of life in the communities we serve.

### **Vision**

The Medical Center at Bowling Green will be an innovative leader in healthcare delivery and outcomes.

### **What We Value**

#### **Quality**

We are committed to providing the highest level of care and service at every opportunity.

#### **People**

People are our most valuable resource. We work together to achieve our organization’s goals. We treat everyone with honor, dignity and respect.

#### **Accountability**

Each of us is responsible for managing our resources ethically and wisely.

## ***Purpose***

The Community Health Needs Assessment has been completed for the following reasons:

- To help meet the Hospital's mission to care for people and improve the quality of life in the communities we serve;
- To comply with the Patient Protection and Affordable Care Act of 2010 and maintain the Hospital's tax exempt status;
- To establish community health needs for the Hospital's service area, to determine areas of greatest need, and for the Hospital to develop a strategic plan to address those needs;
- To involve internal and external resources to ensure needs of individuals are met and that efforts are not duplicated; and
- To create a sustainable process for conducting a community health needs assessment that can be continued for future assessments.

## ***Executive Summary***

The Patient Protection and Affordable Care Act of 2010 includes a provision that requires every tax exempt, non-governmental hospital to:

- Conduct a Community Health Needs Assessment (CHNA) at least every three years.
- Adopt a Strategic Implementation Plan that includes how the needs identified in the assessment will be met.
- Report to the Internal Revenue Service via its 990 tax form how it is meeting its implementation plan.

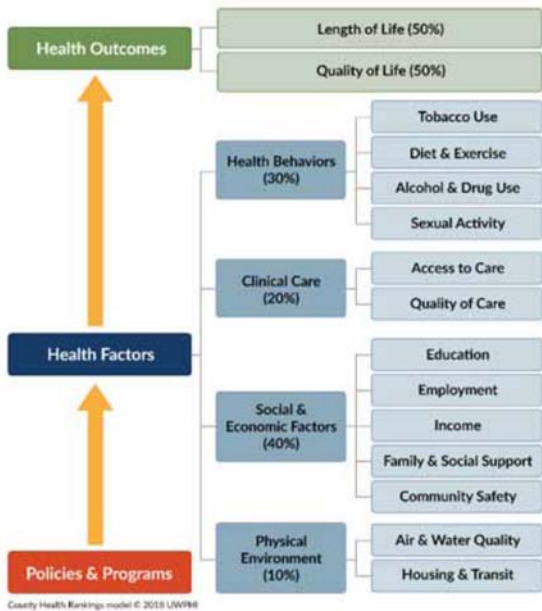
The Community Health Needs Assessment Report details the process used to collect, disseminate and prioritize the information in the assessment. The Medical Center at Bowling Green worked closely with local healthcare and public health leaders throughout the assessment process.

The end result of the assessment process was the development by the hospital of a strategic plan to address the major needs identified.

## Process

In September 2011, The Medical Center joined with the Barren River District Health Department and numerous other healthcare providers, community organizations and leaders to form the Barren River Community Health Planning Council. The Council’s membership consists of non-profit organizations that seek to recognize and serve those most in need in order to benefit the whole community. The goal of the Council was to plan and implement a community health needs survey and assessment process followed by identification of key healthcare needs for the community and then development of strategic plans to meet those needs. Over the fall and winter of 2014-15, partners voted to rename the council to the Barren River Initiative to Get Healthy Together or (BRIGHT) Coalition.

In spring 2018, the BRIGHT coalition initiated Cycle 3 of the community assessment. Members of the coalition were restructured into four subcommittees based on the health focus areas inspired by social determinants of health and the County Health Rankings & Roadmaps. These areas include: health behaviors, clinical care, social and economic factors and physical environment. Members joined the group they most closely identified with professionally.



Gaps and assets related to each of the four newly formed group's area of focus were identified for each of the 10 counties. From there, each of the groups developed survey questions they felt would identify the community needs in their specific focus area. Coalition members were given a chance to review the entire survey as well as provide feedback for changes and improvements to the survey

questions before it was distributed. The survey was disseminated September 1 – November 31, 2018 to all 10 counties in the BRADD area.

The survey was available electronically on hospital and health department websites as well as on paper. The survey was placed in free standing health clinics, libraries, UK Extension office locations, distributed at health fairs, distributed to over 50,000 homes via the Med Center Health WellNews publication with paid postage for return, placed in the Bowling Green Daily News newspaper and provided to local housing authorities. The goal was to have as many different populations represented in the BRADD area respond to the survey as possible. The underserved populations were especially a focus as far as a desired group of survey respondents.

The surveys were analyzed by the Barren River Area Health Department. After reviewing the data collected, it was determined by the BRIGHT coalition that there was not enough representation of the underserved population. Each of the four BRIGHT workgroups determined where the underserved population could potentially be reached and which specific topic(s) of the survey they wanted to narrow in on to collect more information. Questions were developed to survey the specific populations either individually or in a focus group setting. It was also determined that it would be beneficial to ask professionals that work with these populations of people to determine barriers they encounter when trying to meet the needs of the communities they serve.

## Identified Priority Areas

Each BRIGHT Coalition subcommittee identified data driven objectives for their area of focus as listed below.

### Health Services:

- Increase primary care access across BRADD

### Health Equity:

- Increase support for healthy child and family development
- Educate residents and community organizations on available human and social services
- Implement Health in All Policies approach across the BRADD

### Health Environment:

- Educate the public about the importance of the cleanliness of our water resources and air quality
- Decrease commute times throughout the region
- Increase development of mixed-use areas that: improve walkability, encourage biking, provide affordable housing, elevate access to fresh, healthy foods, reduce the number fatalities and injuries, minimize automotive traffic, increase transit use, enhance air quality

### Healthy Lifestyles:

- Access to fresh and healthy food
- Alcohol use, substance use and mental health awareness
- Incorporating exercise and healthy habits

The Medical Center Bowling Green intends to focus on and address the following priority health issues in 2019-2021:

- Substance Abuse
- Chronic Disease

## Substance Abuse

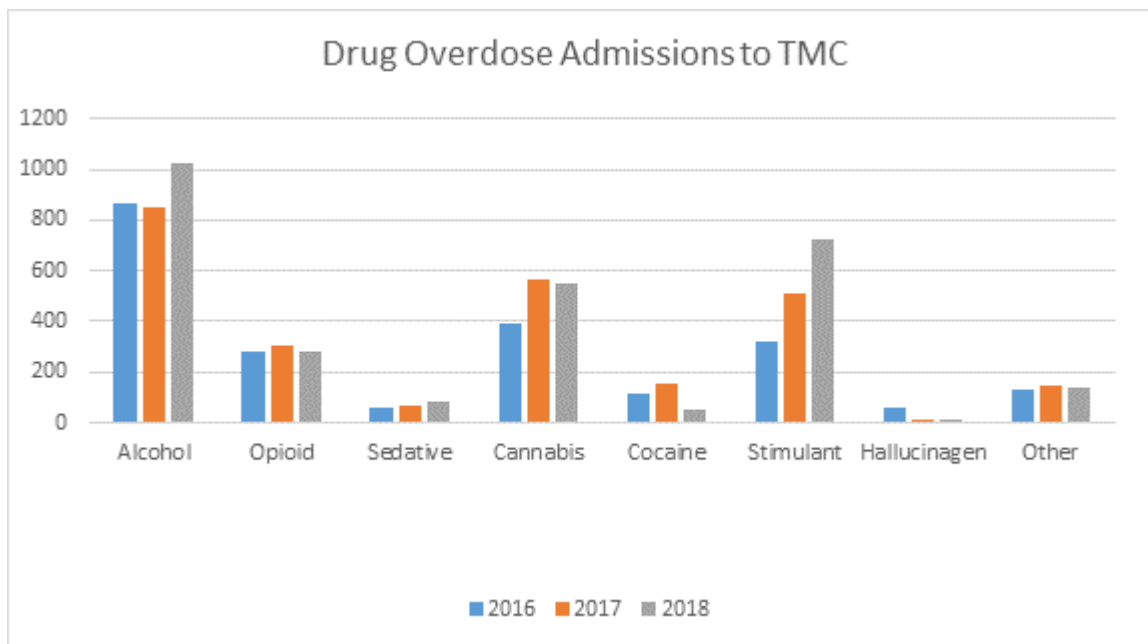
Substance abuse will be a main focus for this community health plan period based on growing data seen within our hospital system over the past five years as well as concern from outside sources.

An increase in overdoses has been seen in the MCBG emergency department. Another area of concern voiced by hospital medical and security staff is an increase in violence towards medical staff as well as increasing challenges to control pain in this population of patients. Based on these findings and growing concern with opioid abuse spreading in areas surrounding our region, a



substance abuse committee was established in 2018 within the hospital system which includes community partners as well. We realize this is a community wide issue and will take full community effort to affect change.

A regional substance abuse forum was held in November 2018 to educate community partners as well as establish a working task force to address prevention, treatment and recovery in the area of substance abuse. These efforts will be ongoing moving forward with this plan and are inclusive of all ten counties in the BRADD region. We will continue to make efforts to expand our community partnerships and build alliances in this area.



Data in the graph above illustrates the increase in drug overdose to the Medical Center Bowling Green from 2016-2018.

**Chronic Disease**

Chronic disease including access to care and prevention for obesity, diabetes, lung disease and heart disease have been ongoing focuses for the previous assessment periods. We know if left uncontrolled, obesity and diabetes especially can have a significant negative impact on overall health and quality of life and are often the catalyst of other chronic health issues. For these reasons, we feel it is important to continue all efforts in these areas.

Part of chronic disease prevention, is having access to and consuming whole, nutrient dense foods along with adequate physical activity and developing healthy habits. We will work with others in the community such as the local farmer’s markets, health department and the housing authority to aid in improving access to fresh and healthy foods. We will continue to provide education to the community on disease prevention, building healthy, inexpensive meals and increasing activity. We



will continue to provide opportunities for healthy activity including the annual Med Center Health 10K Classic race which includes the Children's Classic race.

Education and prevention work will continue with tobacco and lung disease and will include tobacco cessation. Kentucky continues to be one of the leading states in adult smoking rates in the United States per 2017 CDC data. According to statistics provided by the National Institute on Drug Abuse, teens are more likely to use e-cigarettes than cigarettes. Teen e-cigarette users are more likely to start smoking cigarettes. Education and prevention efforts will also focus on the harmful effects of e-cigarette and juul usage as there has been an increase in usage of these devices in the teen population.

**Explanation of priorities that will not be addressed at this time:**

Several issues identified by the BRIGHT Coalition subcommittees are areas that Med Center Health already has ongoing actions in place, as discussed below, but are not our priority focus areas for this cycle. Other issues may be outside of the resources Med Center Health is able to provide but we maintain relationships with the entities addressing the issues and support their efforts through participating in events, providing education, etc. as appropriate.

The priority issues listed within the Healthy Environment subcommittee including objectives of education around clean air and water, development of mixed use areas and decreased commute times are vital to the health of our community. This is an issue that Med Center Health does not have in-house resources to address but will support efforts driven by the coalition's workgroup and participate in activities as appropriate that will address these issues.

The areas identified by the Health Equity subcommittee are areas that other agencies including SOKY Workforce Development, Chamber of Commerce and Community Action Council are working on. Med Center health has ongoing relationships with these agencies, participates in job fairs and works with them to support and foster a healthy community through participation in events, meeting identified health needs as able and supporting education needs.

Health Equity identified the need to educate residents on available human and social services. Med Center Health has a referral line in place that community members can call to help identify the physician, resource or appropriate social service needed to address their need to aid with this objective.

The Health Services subcommittee identified increasing primary care access across the BRADD. Med Center Health continuously works to identify and as able fill areas of need related to increased primary care access. Most recently, Med Center Health combined the Med Center Health Community Clinic which provides affordable basic medical care to uninsured and underinsured patients living in the community and Med Center Health Primary Care clinic to increase the number of providers available to care for the patient's in need. The efforts in the area of increasing access to care for the communities MCH serves will remain ongoing.

The assessment results and strategic plan were submitted to the hospital board for review and approval and then made available to the community on the [Med Center Health](#) website. The BRIGHT Coalition's Executive Summary booklets outline the Community Health Plan for 2019-2021 and are available as a link on the Med Center Health website as well as in paper format throughout the community.

## **THE MEDICAL CENTER at BOWLING GREEN IMPLEMENTATION STRATEGIES FOR ADDRESSING COMMUNITY HEALTH NEEDS**

**2019-2021**

Through the research and recommendations from the Community Health Needs Assessment and hospital staff, administration and Board of Directors, the following strategies will guide The Medical Center leadership in addressing our community's health needs over the next three years.

### **Partnerships With Key Community Health Providers & Organizations**

#### **Key partners:**

- Bowling Green Agency for Substance Abuse Policy (ASAP)
- Warren County Drug Task Force
- National Stroke Association
- Kentucky Heart Disease and Stroke Prevention Task Force
- American Lung Association
- American Heart Association and Society of Cardiovascular Patient Care
- Norton Healthcare and UK Healthcare Stroke Care Network
- Barren River District Health Department
- Bowling Green Housing Authority
- Fairview Primary Care Center
- Kentucky Cancer Program
- American Cancer Society-Warren Co. Chapter
- Medicaid Managed Care Program/Case Management
- International Center/Refugee Assistance
- South Central Kentucky Community Action
- Western Kentucky University
- Warren County Schools/Bowling Green Independent City Schools
- SOKY Farmer's Market
- Hospirus Health of Barren River
- Hospice of South Central Kentucky



- WBKO
- UK Extension Office
- UK Markey Cancer Center
- LifeSkills, Inc.

## **Implementation Strategies**

### ***Identified Priority: Substance Abuse***

#### Goals:

- Reduce the incidence of drug related overdoses and deaths.
- Promote abstinence among youth through prevention efforts.
- Provide long term solutions and care to users seeking treatment and recovery for substance abuse.

#### Partners:

- Barren River District Health Department
- Bowling Green Agency for Substance Abuse Policy (ASAP)
- Drug Free Warren County Task Force
- Warren County/Bowling Green Independent City Schools
- Lifeskills, Inc.

#### Plan:

1. Work with the Bowling Green ASAP and Drug Free Warren County Task Force on outreach efforts to provide youth and families with prevention education.
2. Educate and empower the community with knowledge related to substance abuse, who's at risk and resources available.
3. Explore with our community partners how to fill identified gaps in treatment and recovery in our region.
4. Educate and provide tools to providers to safely prescribe opioids and how to monitor usage.

## ***Identified Priority: Chronic Disease Prevention & Management***

### Partners:

- Barren River District Health Department
- Bowling Green Housing Authority
- Medicaid Managed Care Program/Case Management
- UK Extension Office
- SOKY Farmers Market
- Warren County Schools/Bowling Green Independent City Schools
- International Center/Refugee Assistance
- Kentucky Heart Disease and Stroke Prevention Task Force
- American Lung Association
- American Heart Association and Society of Cardiovascular Patient Care
- Norton Healthcare and UK Healthcare Stroke Care Network
- Kentucky Cancer Program
- American Cancer Society-Warren Co. Chapter
- UK Markey Cancer Center
- WBKO
- WKU

### Goals:

- Enhance public knowledge of their obesity risk and how it affects overall health and risk of chronic disease.
- Focus on lifestyle changes to reduce risk of obesity and other chronic diseases.
- Educate public on resources available to reduce obesity as well as resources and treatment for chronic disease including diabetes, heart disease and lung disease.
- Enhance public understanding on the dangers of tobacco use including the dangers of e-cigarettes and juuls.

### Plan:

1. The Diabetes Prevention program will continue to be offered throughout the year to prevent type 2 diabetes. Benefit continues to be covered by



- Kentucky Employee Health Plan. Will partner with Barren River District Health Department as able to offer more classes if needed.
2. Partner with SOKY Farmer's Market for National Nutrition Month to promote healthy food choices and affordable, local fruits and vegetables.
  3. Provide diabetes, heart disease and lung disease prevention (through partnerships with Norton and UK Stroke Care Network) and awareness through speaker's bureau, community & worksite wellness health fairs, articles in newsletter publications, media and classes at Med Center Health Health & Wellness.
  4. Offer glucose screenings, blood pressure and stroke risk assessments annually at the Med Center Health Health & Wellness Expo.
  5. Educate youth through school events, classes, health fairs/community events and media on the dangers of tobacco use.
  6. Offer blood pressure screenings to the public through the CARE (The Cardiovascular, Assessment, Risk Reduction and Education Collaborative) collaborative partnership with the Kentucky Heart Disease and Prevention Task Force.
  7. Offer the American Lung Association's Freedom from Smoking program at Health & Wellness and worksites.

### ***Communication Plan***

The Medical Center Bowling Green will publish the Community Health Needs Assessment, including the survey results and strategic plan, on its web site and make hard copies available to the public upon request. The results will also be incorporated into the hospital's annual IRS tax form 990 submission.





Med Center Health

The Medical Center at Bowling Green

Community Health  
Needs Assessment

